



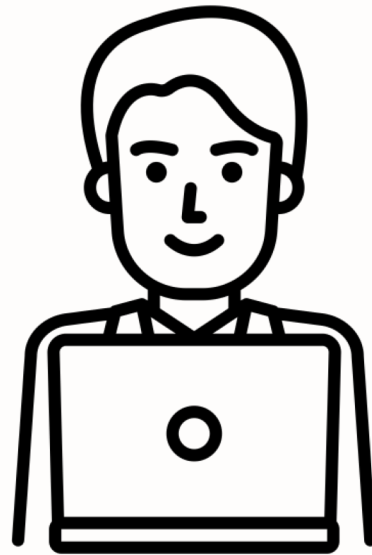
ICSE 2018

EVA: A Tool for Visualizing Software Architecture Evolution

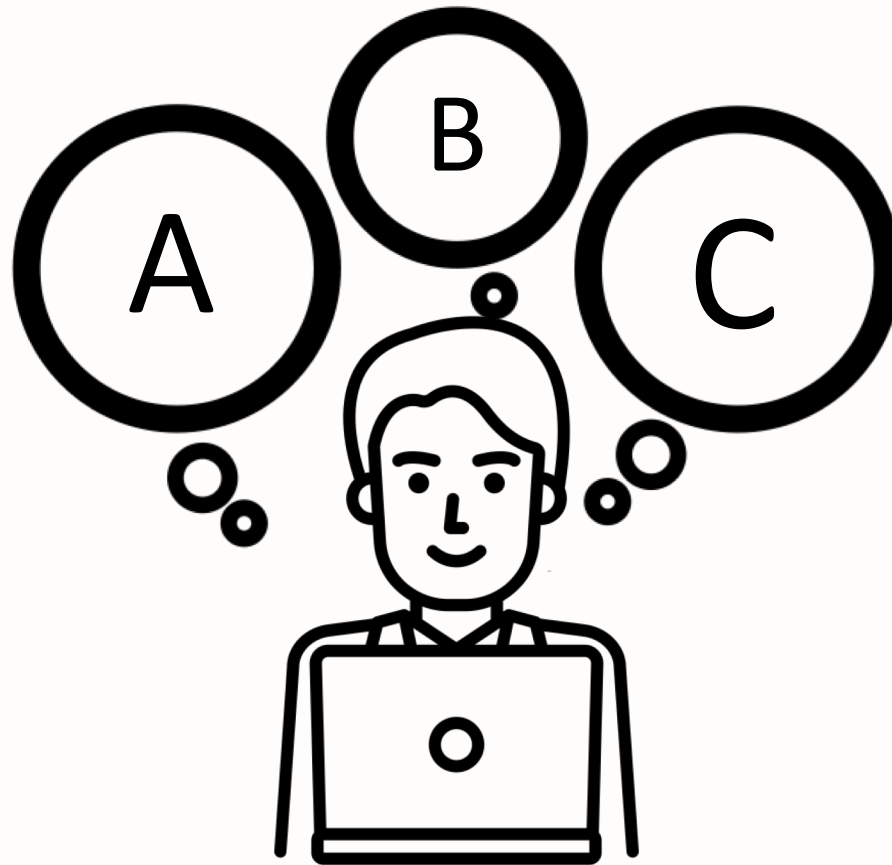
Daye Nam, Youn Kyu Lee, and Nenad Medvidovic

University of Southern California

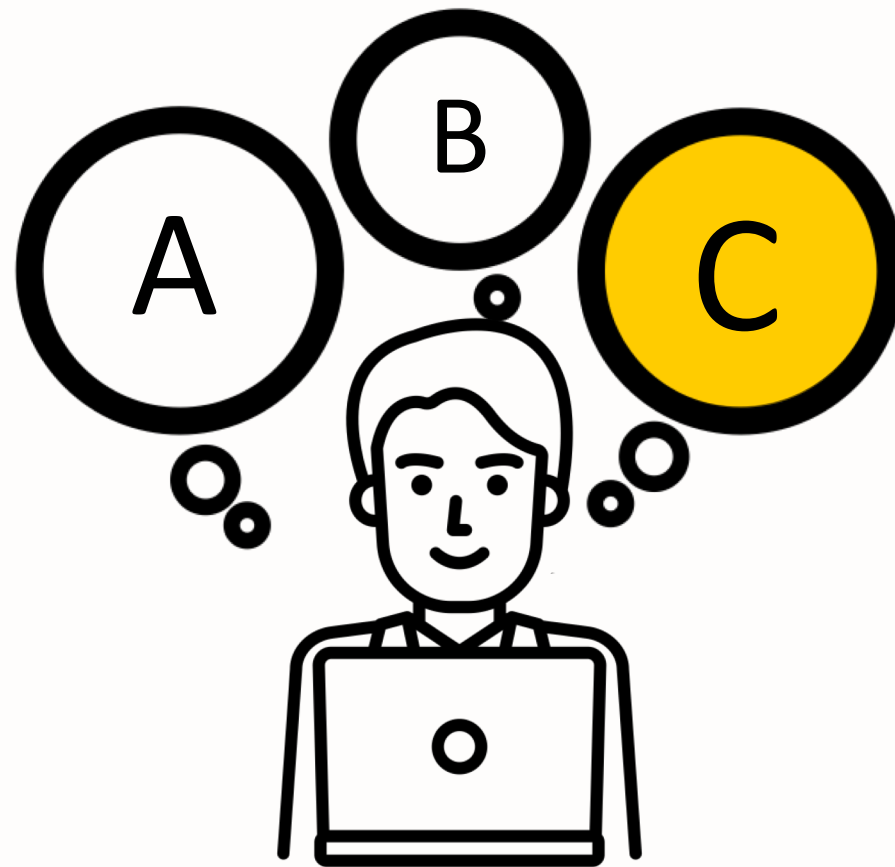
Motivation



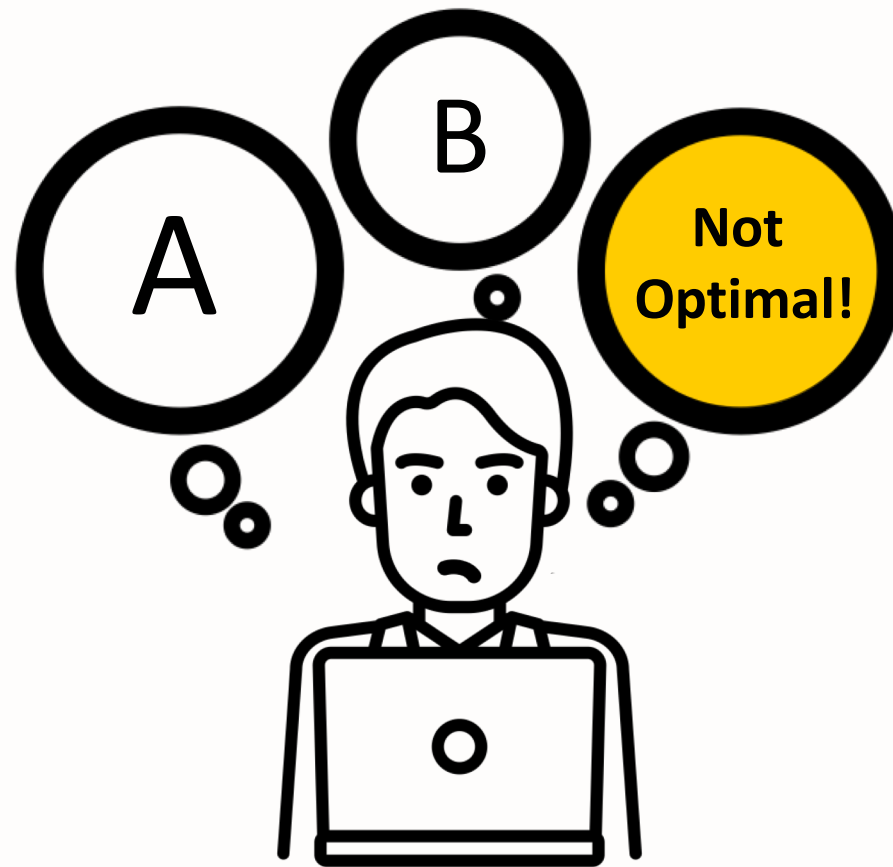
Motivation



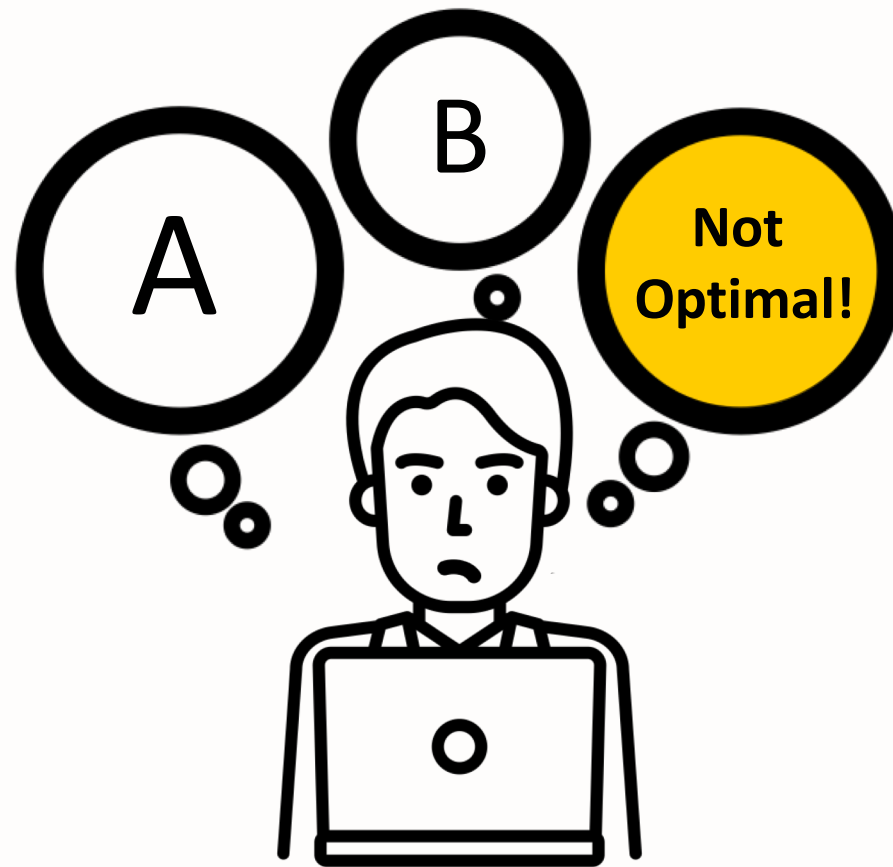
Motivation



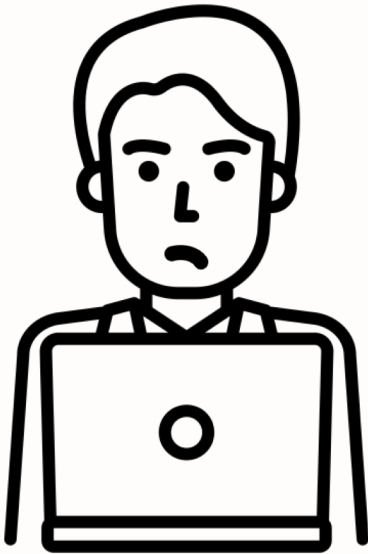
Motivation



Motivation



Motivation



Inadvertent Architectural Changes

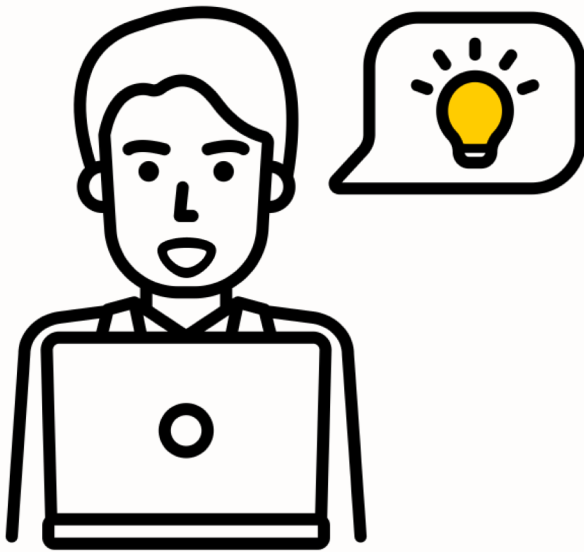
Motivation



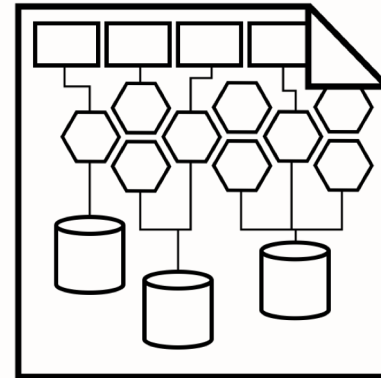
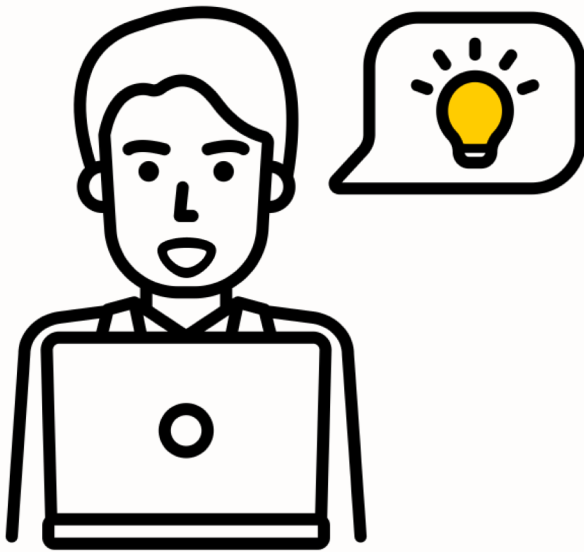
Inadvertent Architectural Changes

- **Accumulation of Technical Debt**
- **Deterioration of Software Quality**

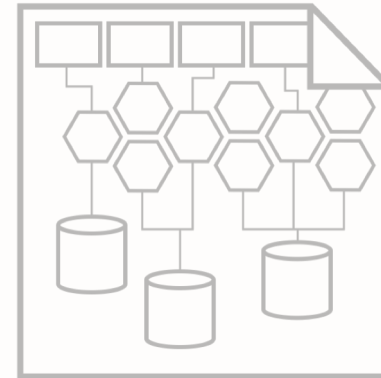
Motivation



Motivation



Motivation



Motivation



Repository	Commit Message	Date
android	Fix a documentation error.	May 10, 2018
guava-gwt	Use the type annotation version of @Nullable in the Java 8 branch	May 9, 2018
guava-gwtlib	Use the type annotation version of @Nullable in the Java 8 branch	May 9, 2018
guava-gwtstubs	Use the type annotation version of @Nullable in the Java 8 branch	May 9, 2018
guava	Fix a documentation error.	May 10, 2018
refactorings	Open source refactorings directory. This is knowingly very simple, wic...	Mar 28, 2018
util	Actually export print_surefire_reports.sh.	Nov 2, 2017
gitattributes	Add a .gitattributes file to control line ending normalization, which...	Nov 4, 2014
gitignore	Add .DS_Store to .gitignore.	Mar 30, 2016
.travis.yml	Hide Downloading/Downloaded files from output.	Feb 16, 2018
CONTRIBUTING.md	usage of American English spelling for "license"	Oct 5, 2016
CONTRIBUTORS	fix indentation	Apr 14, 2011
COPYING	fix indentation	Apr 14, 2011
RELEASE.md	Prepare for release 26.0.	Apr 26, 2018
cycle_writelists.txt	Fix two bugs in MinMaxPriorityQueue (introduced in [] First is a bug ...	Nov 28, 2016
javadoc-style-sheet.css	Fix a couple of issues with JDK7 javadoc style by using a slightly cu...	Jul 17, 2013
pom.xml	Use the type annotation version of @Nullable in the Java 8 branch	May 9, 2018

Motivation

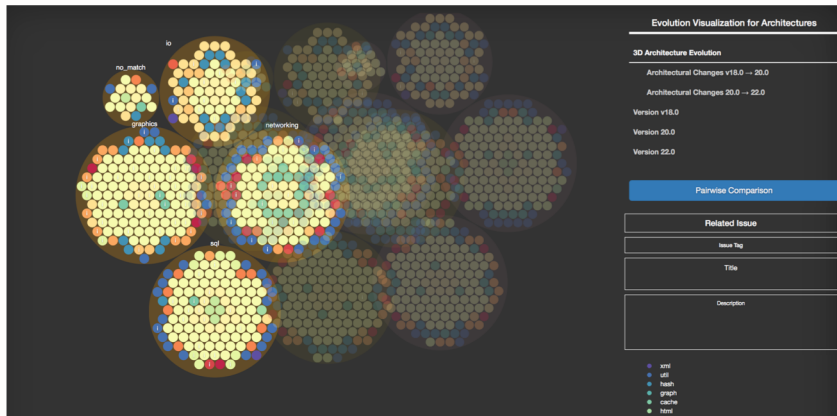


Repository	Commit Message	Commit Date	Author
android	Fix a documentation error.	May 10, 2018	Mar 30, 2016
guava-gwt	Use the type annotation version of @Nullable in the Java 8 branch	May 9, 2018	Feb 16, 2018
guava-gestlib	Use the type annotation version of @Nullable in the Java 8 branch	May 9, 2018	Oct 5, 2018
guava-tests	Use the type annotation version of @Nullable in the Java 8 branch	May 9, 2018	Apr 14, 2011
guava	Fix a documentation error.	May 10, 2018	Apr 14, 2011
factories	Open source factories directory. This is knowingly very simple, will...	Mar 28, 2016	Apr 28, 2018
util	Actually export <code>print_surefire_reports.sh</code> .	Nov 2, 2017	Nov 28, 2016
gitattributes	Add a <code>gitattributes</code> file to control line ending normalization, which...	Nov 4, 2014	Jul 17, 2013
gitignore	Add .DS_Store to <code>gitignore</code> .	Mar 30, 2016	May 9, 2018
.travis.yml	Hide Downloading/Downloaded files from output.	Feb 16, 2018	Apr 14, 2011
CONTRIBUTING.md	usage of American English spelling for "license"	Oct 5, 2018	Apr 28, 2018
CONTRIBUTORS	fix indentation	Apr 14, 2011	Nov 28, 2016
COPYING	fix indentation	Apr 14, 2011	Apr 14, 2011
README.md	Prepare for release 26.0.	Apr 28, 2018	Jul 17, 2013
cycle_whiteist.txt	Fix two bugs in <code>MinMaxPriorityQueue</code> (introduced in <code>PriorityQueue</code> is a bug ...	Nov 28, 2016	May 9, 2018
javadoc-stylesheet.css	Fix a couple of issues with JDK 7 javadoc style by using a slightly cu...	Jul 17, 2013	Jul 17, 2013
pom.xml	Use the type annotation version of @Nullable in the Java 8 branch	May 9, 2018	May 9, 2018

Motivation

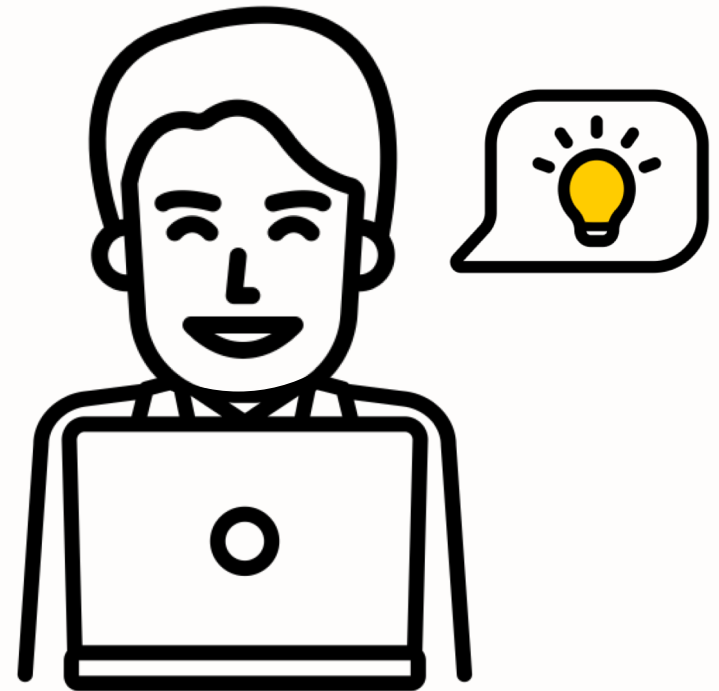


Motivation



EVA:

Evolution Visualization of Architecture

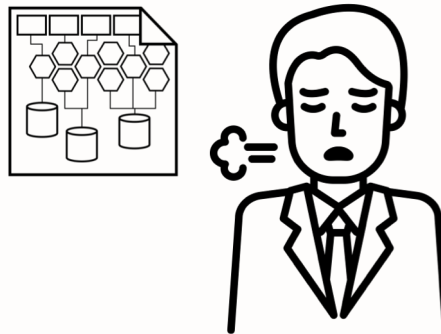


Contributions

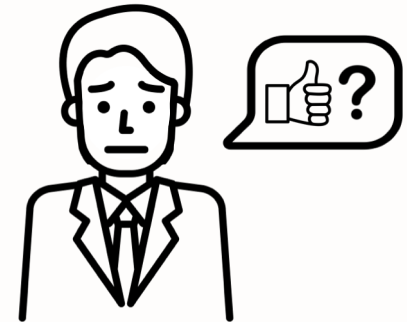
Visualization



Exploration



Evaluation

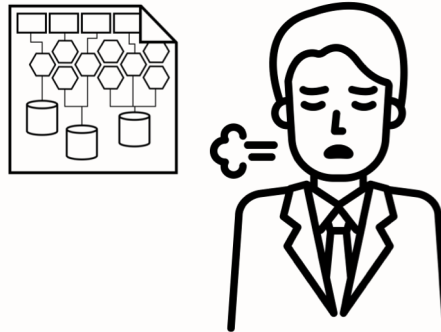


Contributions

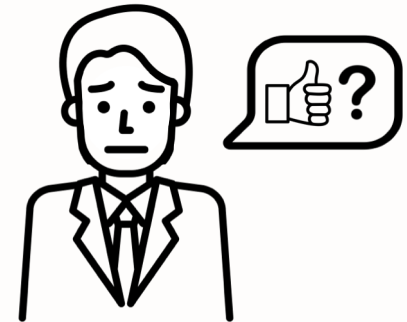
Visualization



Exploration

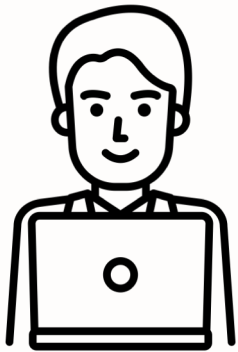


Evaluation

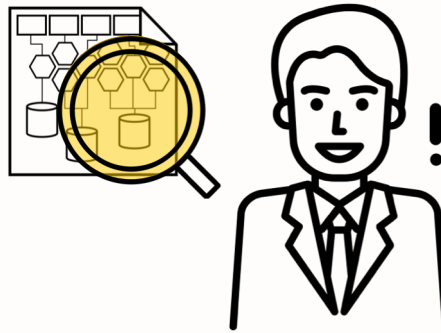


Contributions

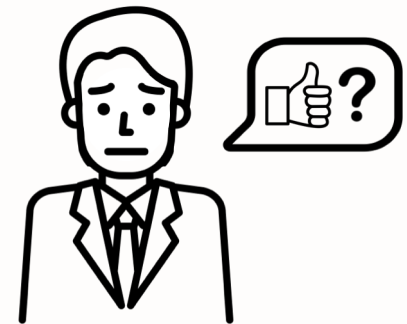
Visualization



Exploration



Evaluation

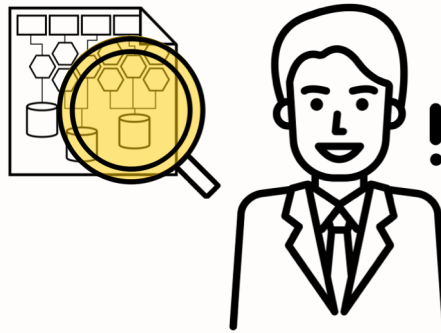


Contributions

Visualization



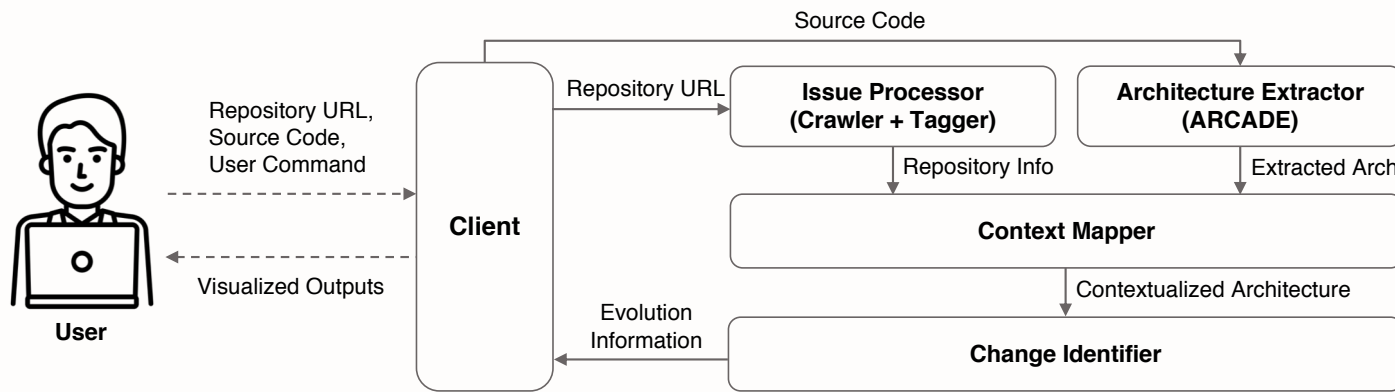
Exploration



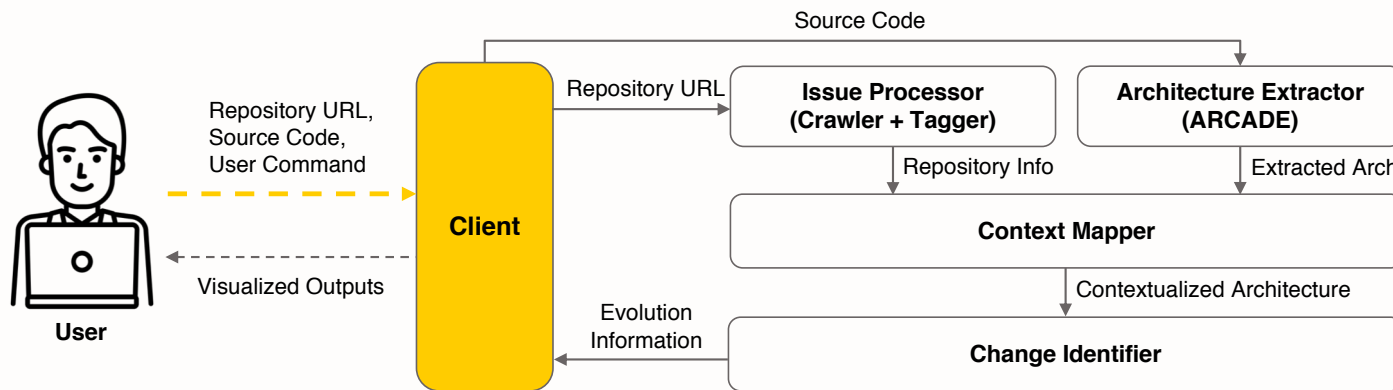
Evaluation



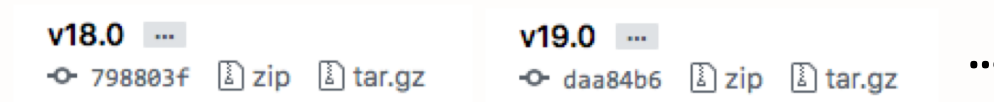
EVA's Architecture



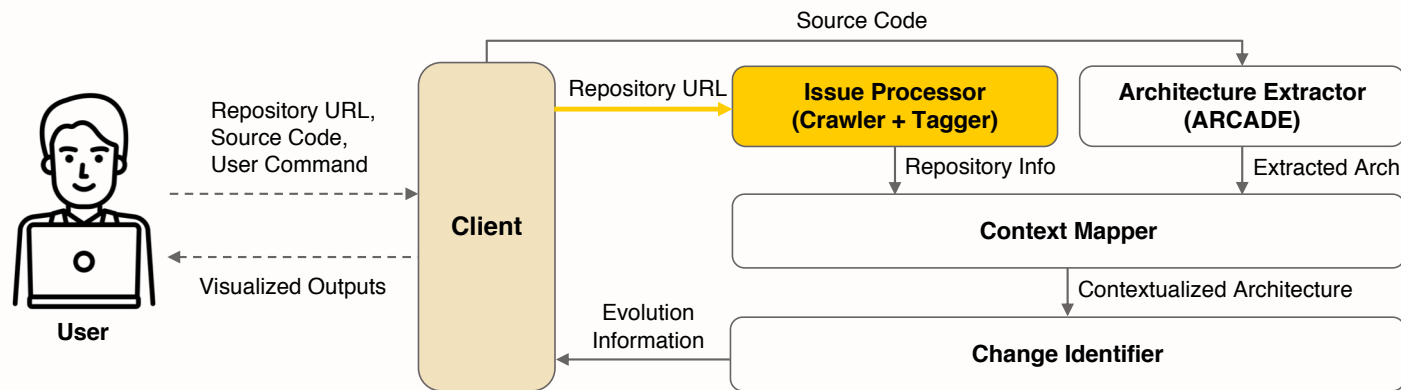
EVA's Architecture



- Repository URL: <https://github.com/google/guava>
- Source Code:



EVA's Architecture

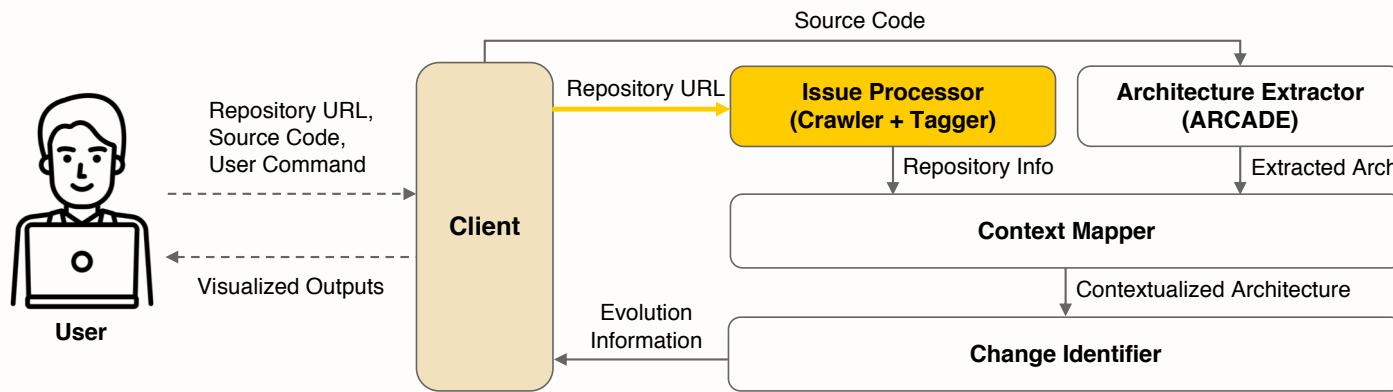


...

 Issue 1 #2922 by user1 was closed Aug 23, 2017
 Issue 2 #2921 by user2 was closed Aug 22, 2017
 Issue 3 #2920 by user3 was closed Oct 9, 2017  23.2

...

EVA's Architecture



...

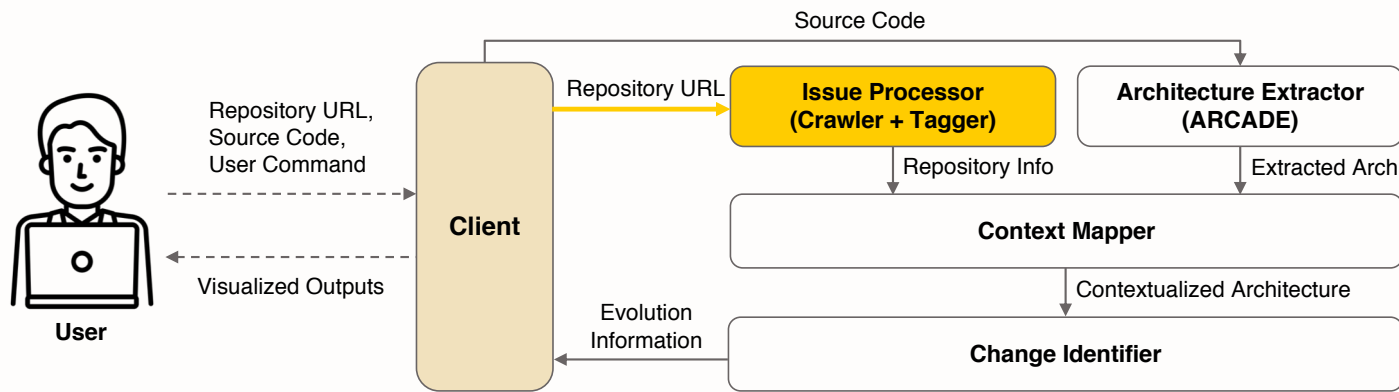
	Issue 1 #2922 by user1 was closed Aug 23, 2017
	Issue 2 #2921 by user2 was closed Aug 22, 2017
	Issue 3 #2920 by user3 was closed Oct 9, 2017 23.2



- Issue Title
- Fixed Time
- Issue Description
- Issue Type
- Impacted Files

...

EVA's Architecture



...

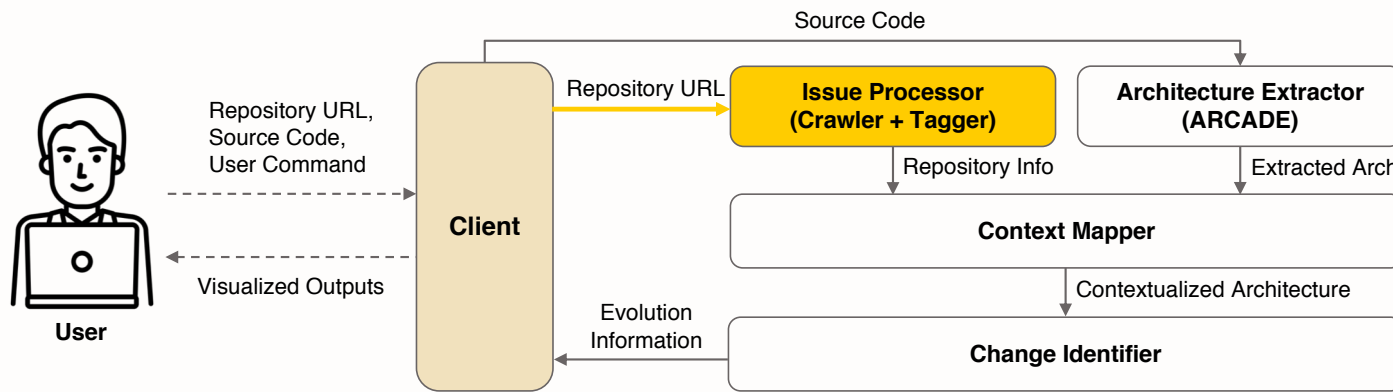
Issue 1	#2922 by user1 was closed Aug 23, 2017
Issue 2	#2921 by user2 was closed Aug 22, 2017
Issue 3	#2920 by user3 was closed Oct 9, 2017 23.2

...



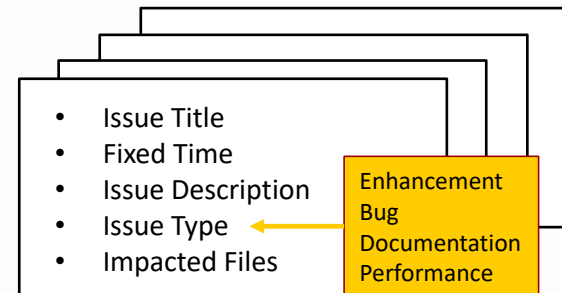
- Issue Title
- Fixed Time
- Issue Description
- Issue Type
- **Impacted Files**

EVA's Architecture



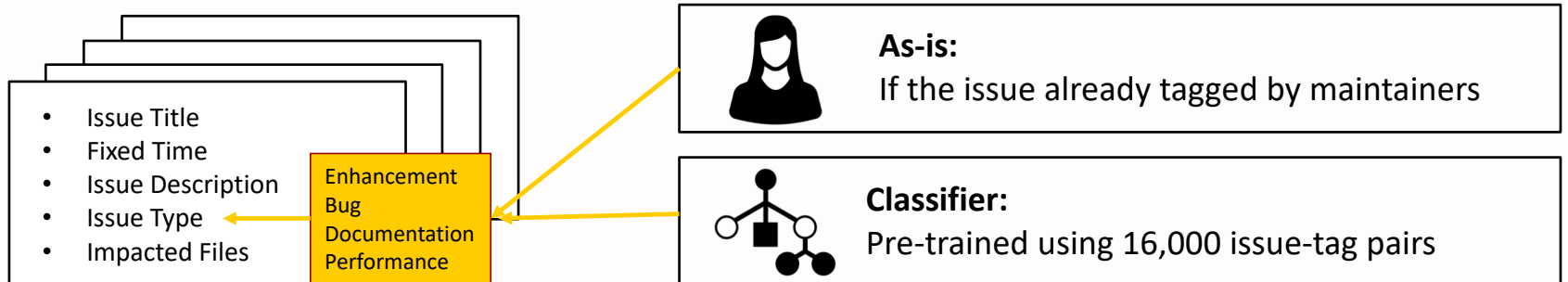
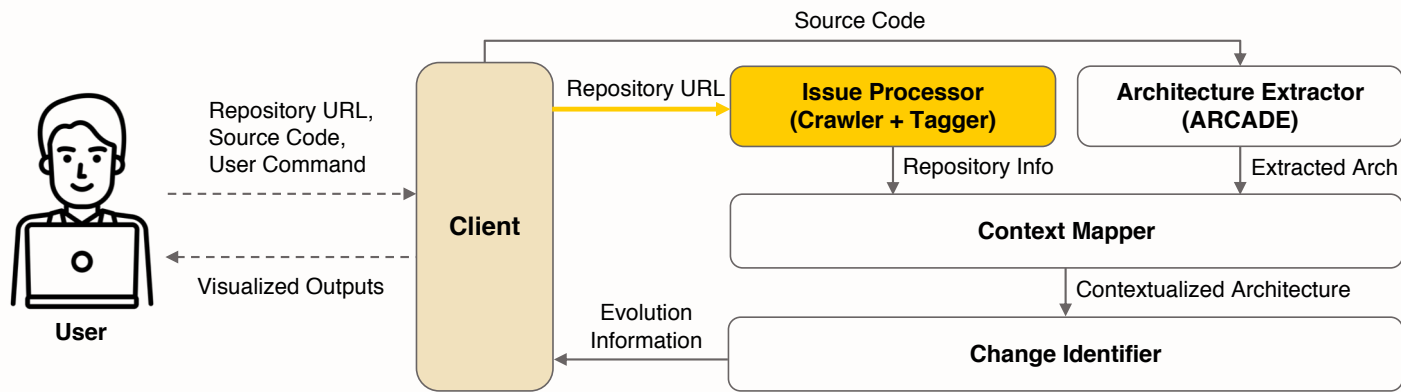
...

🔖	Issue 1
	#2922 by user1 was closed Aug 23, 2017
🔖	Issue 2
	#2921 by user2 was closed Aug 22, 2017
🔖	Issue 3
	#2920 by user3 was closed Oct 9, 2017 🔖 23.2

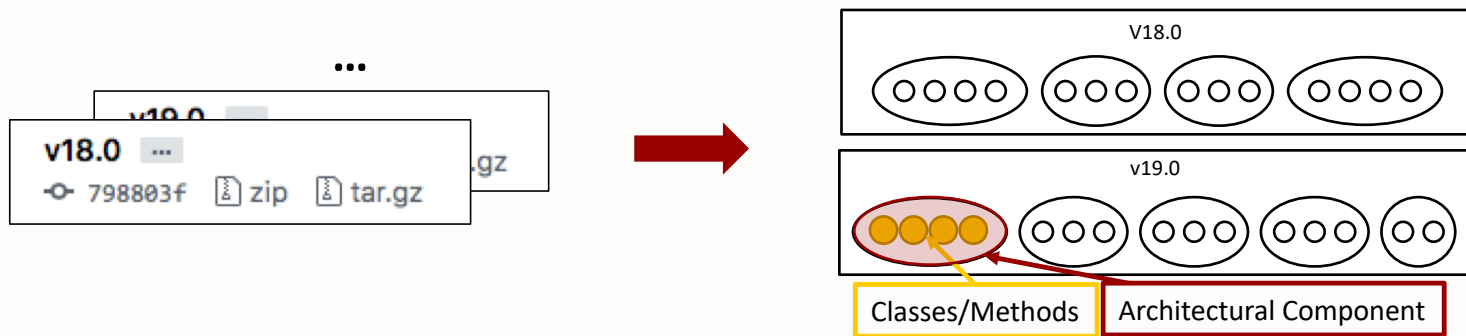
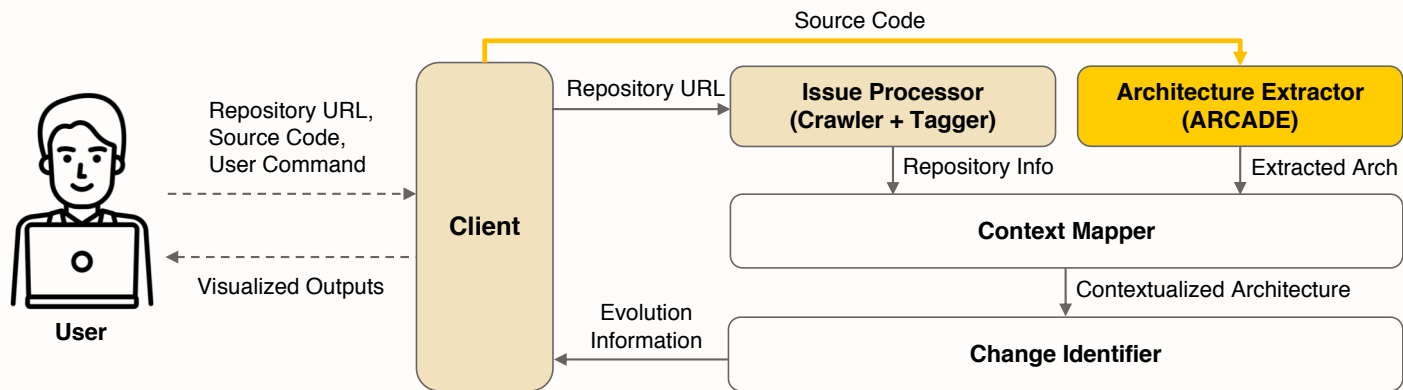


...

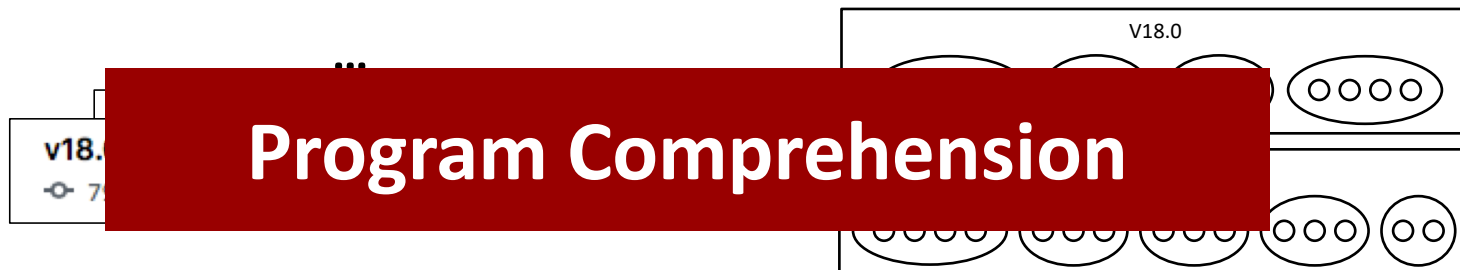
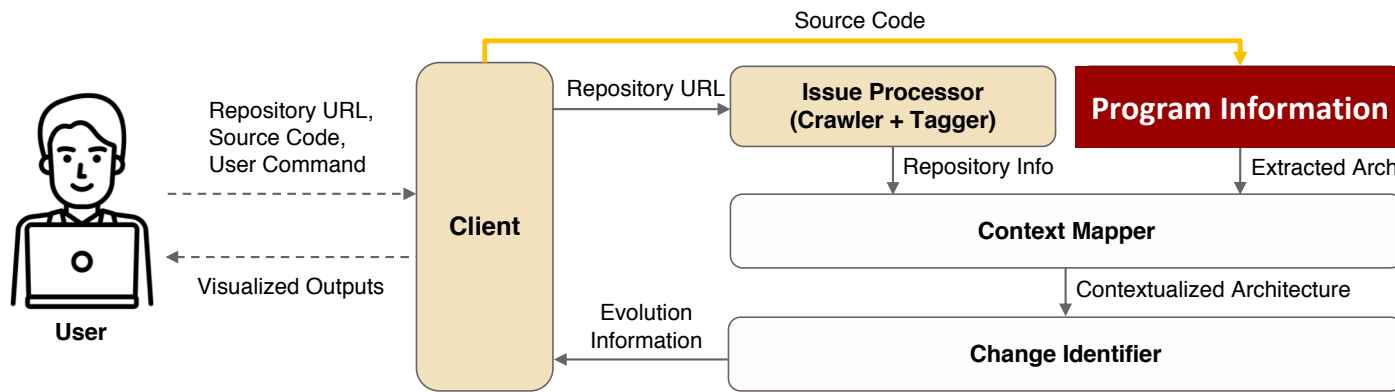
EVA's Architecture



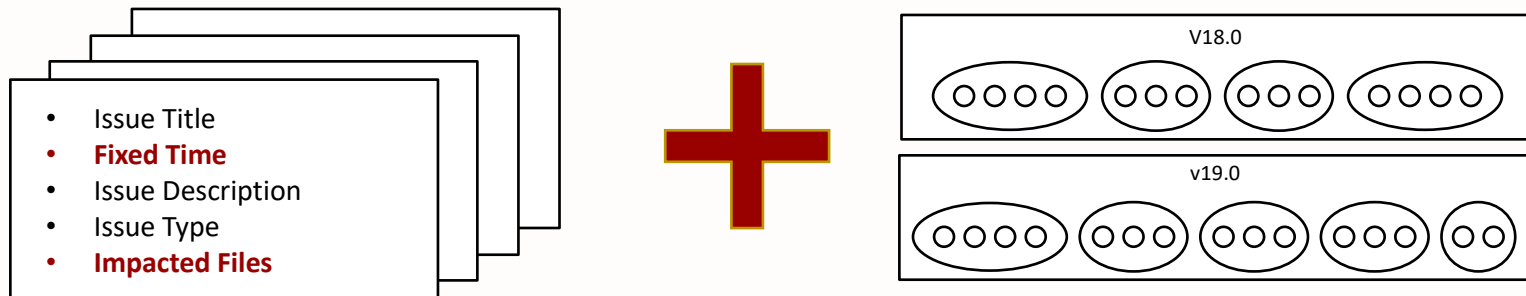
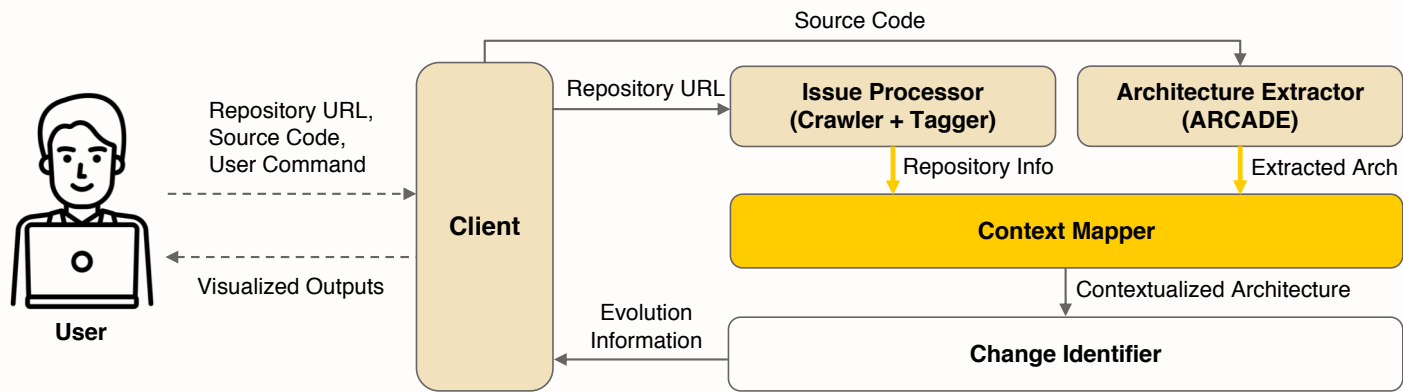
EVA's Architecture



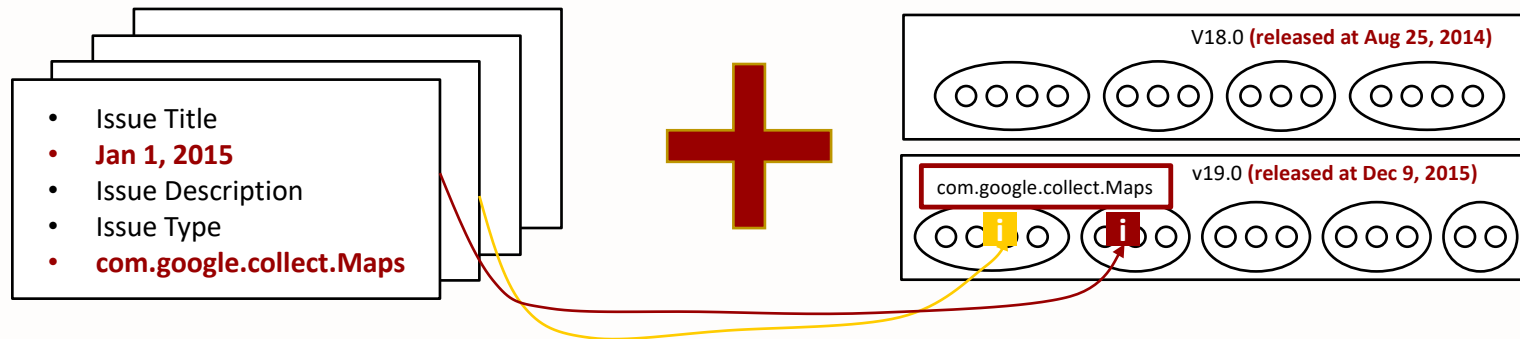
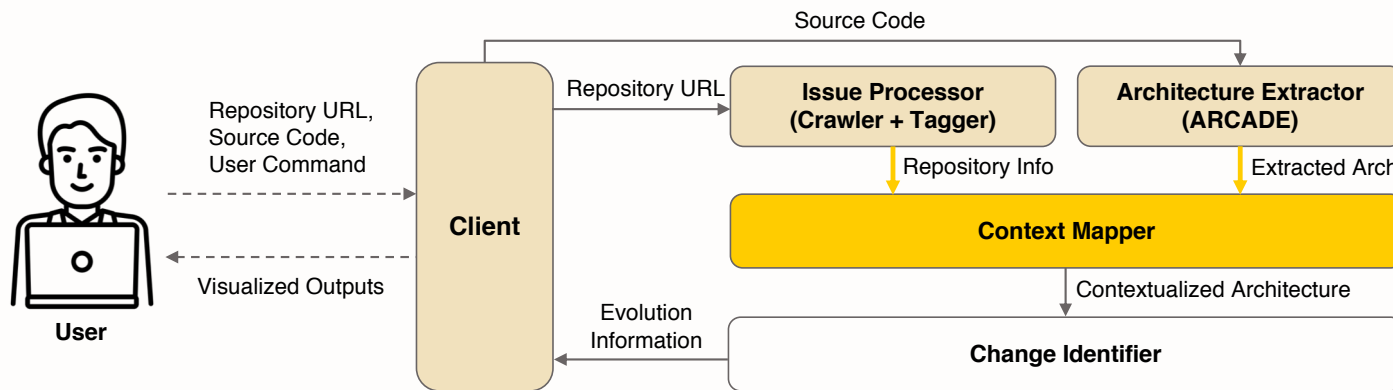
EVA's Architecture



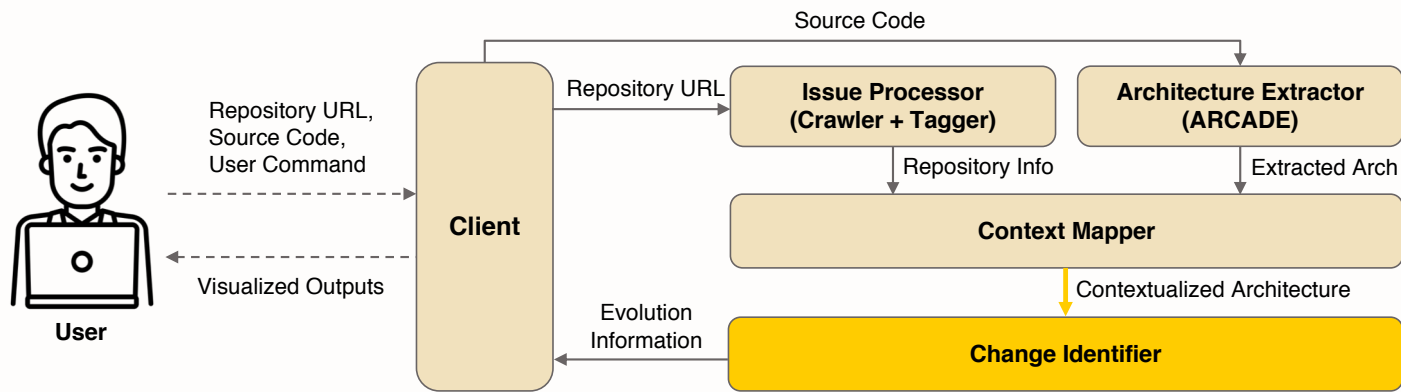
EVA's Architecture



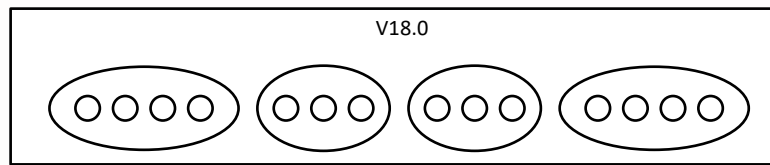
EVA's Architecture



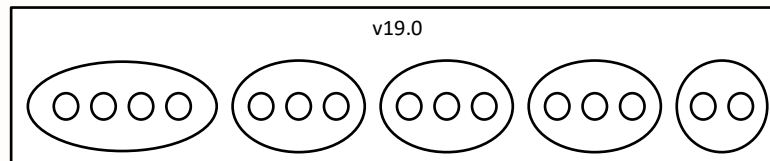
EVA's Architecture



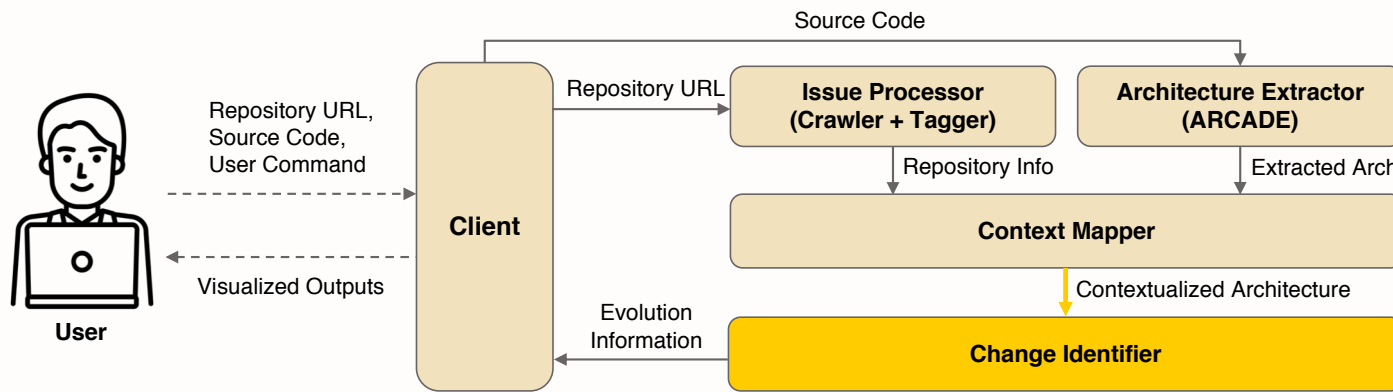
Before



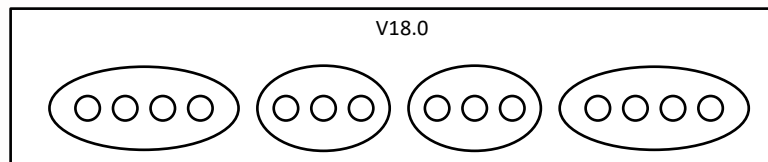
After



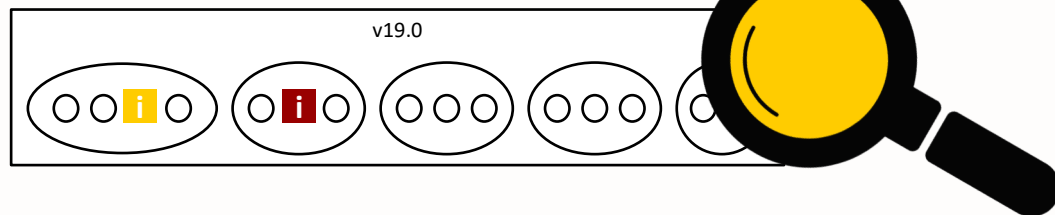
EVA's Architecture



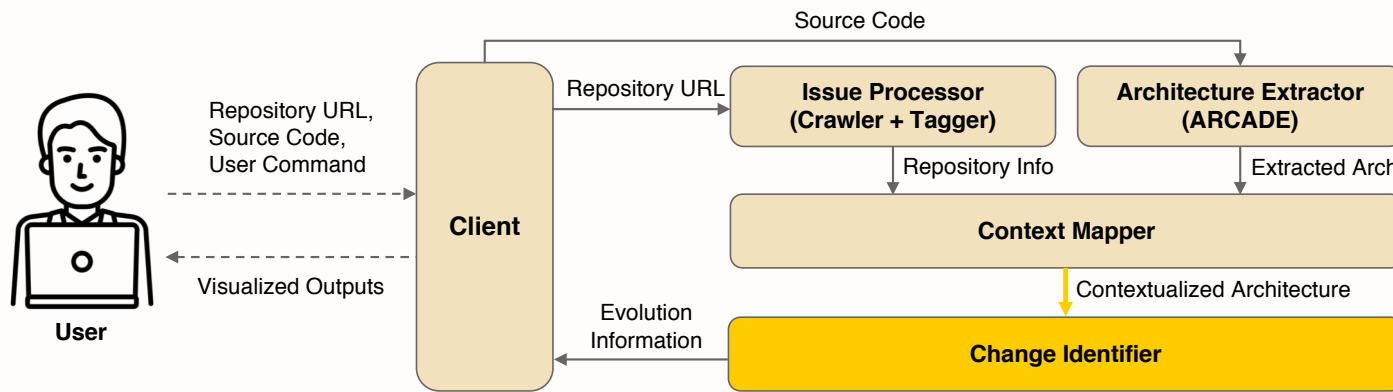
Before



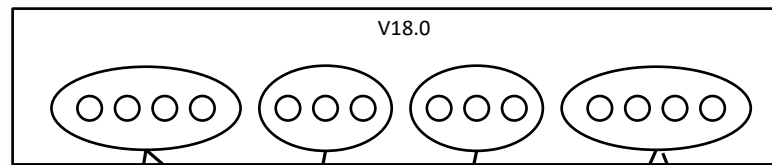
After



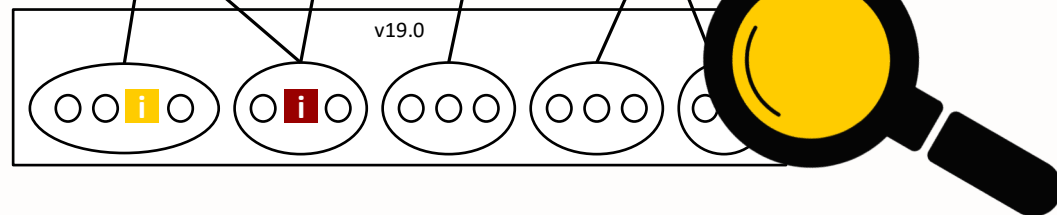
EVA's Architecture



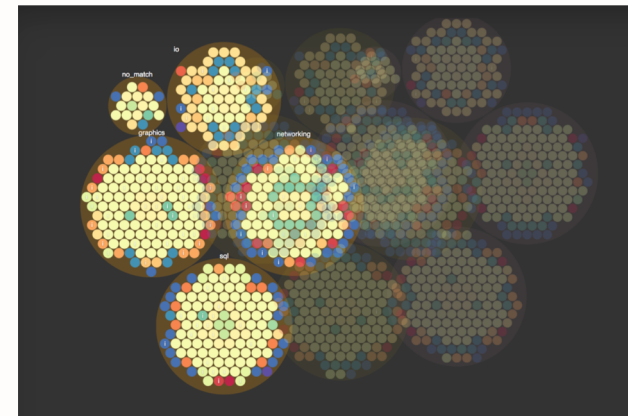
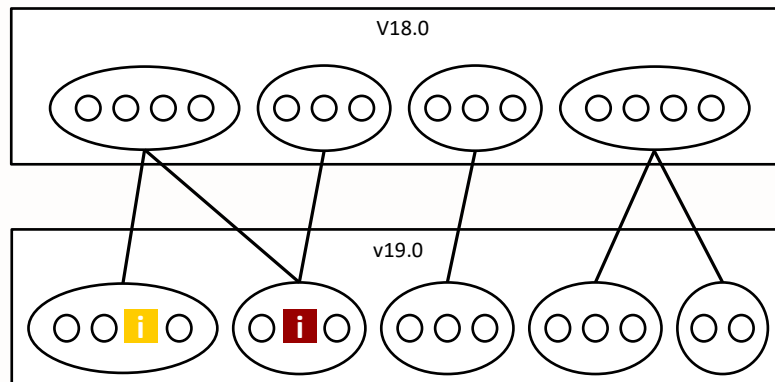
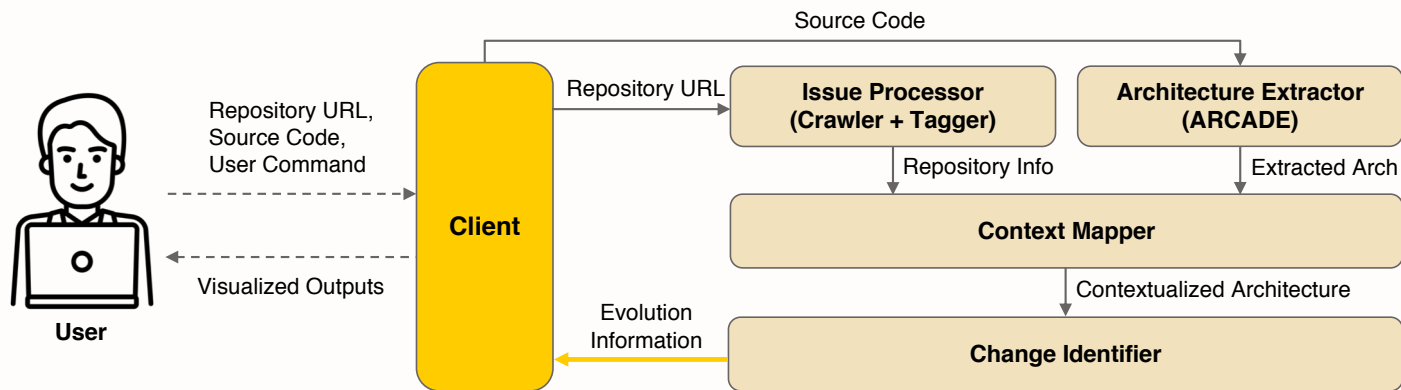
Before



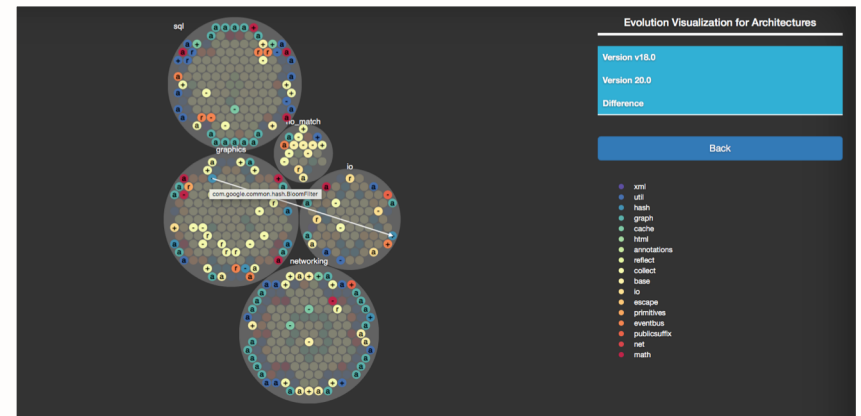
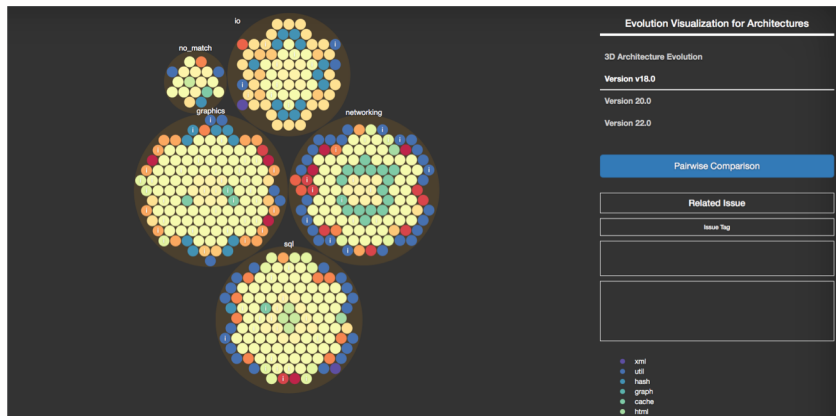
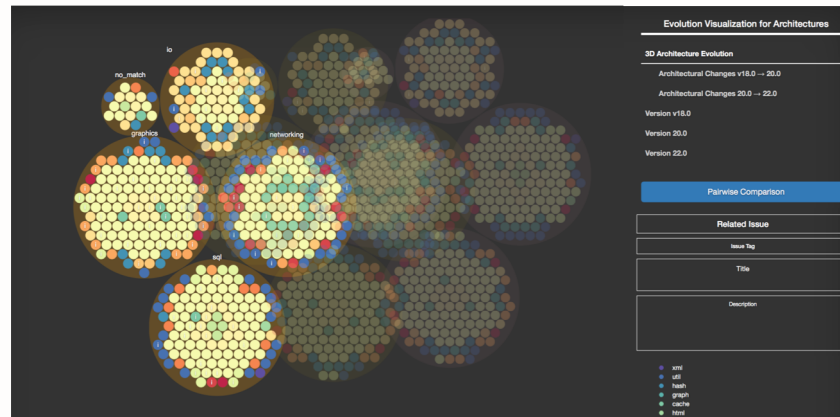
After



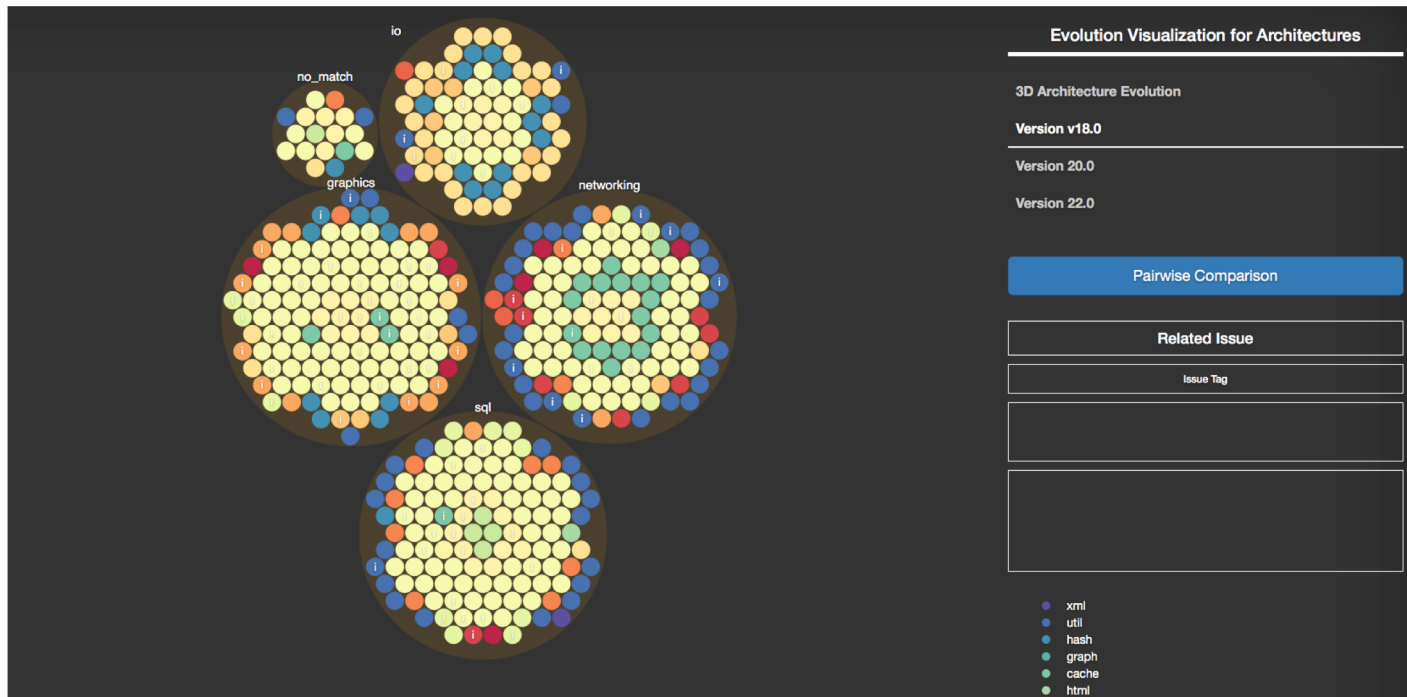
EVA's Architecture



Visualization

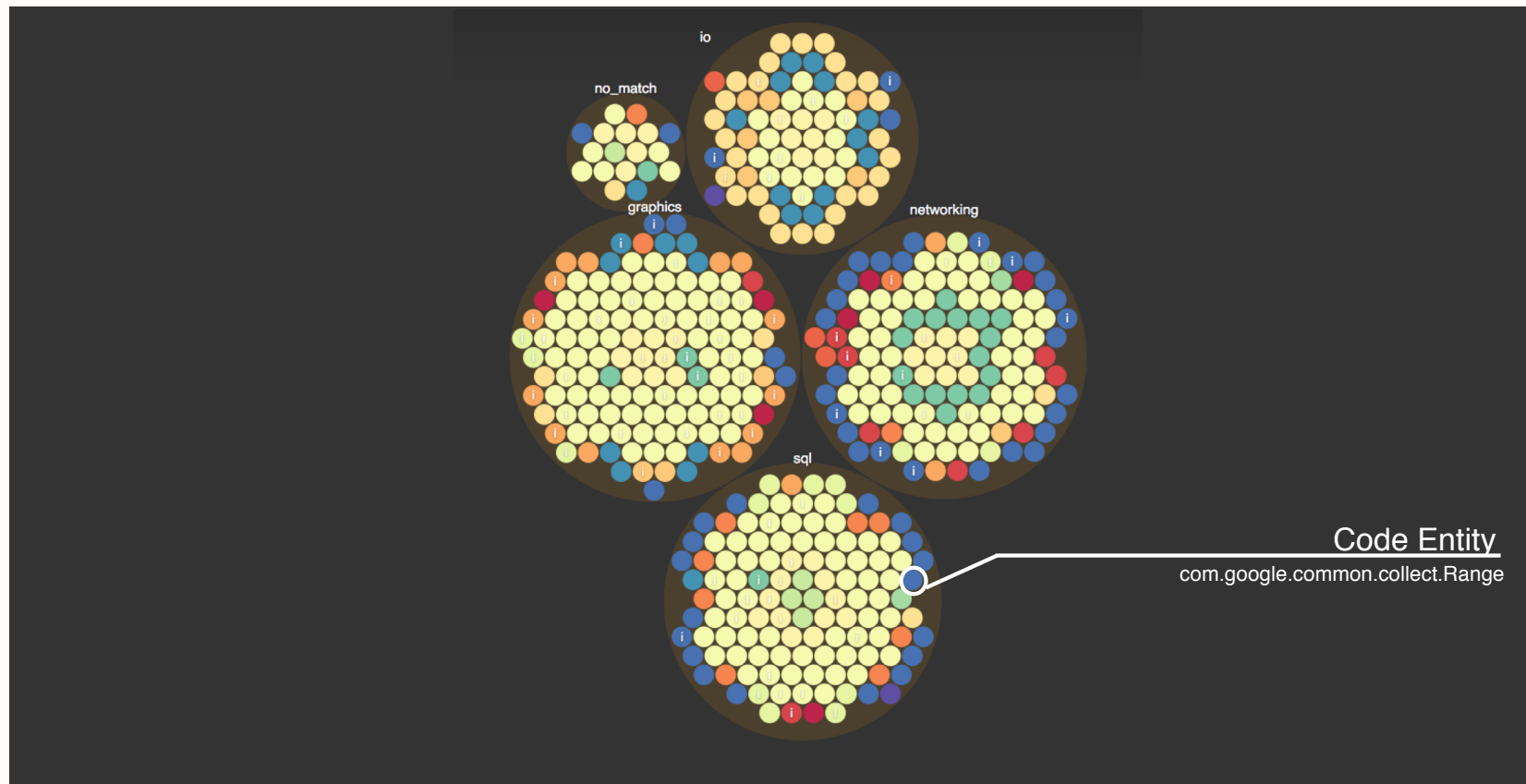


Visualization



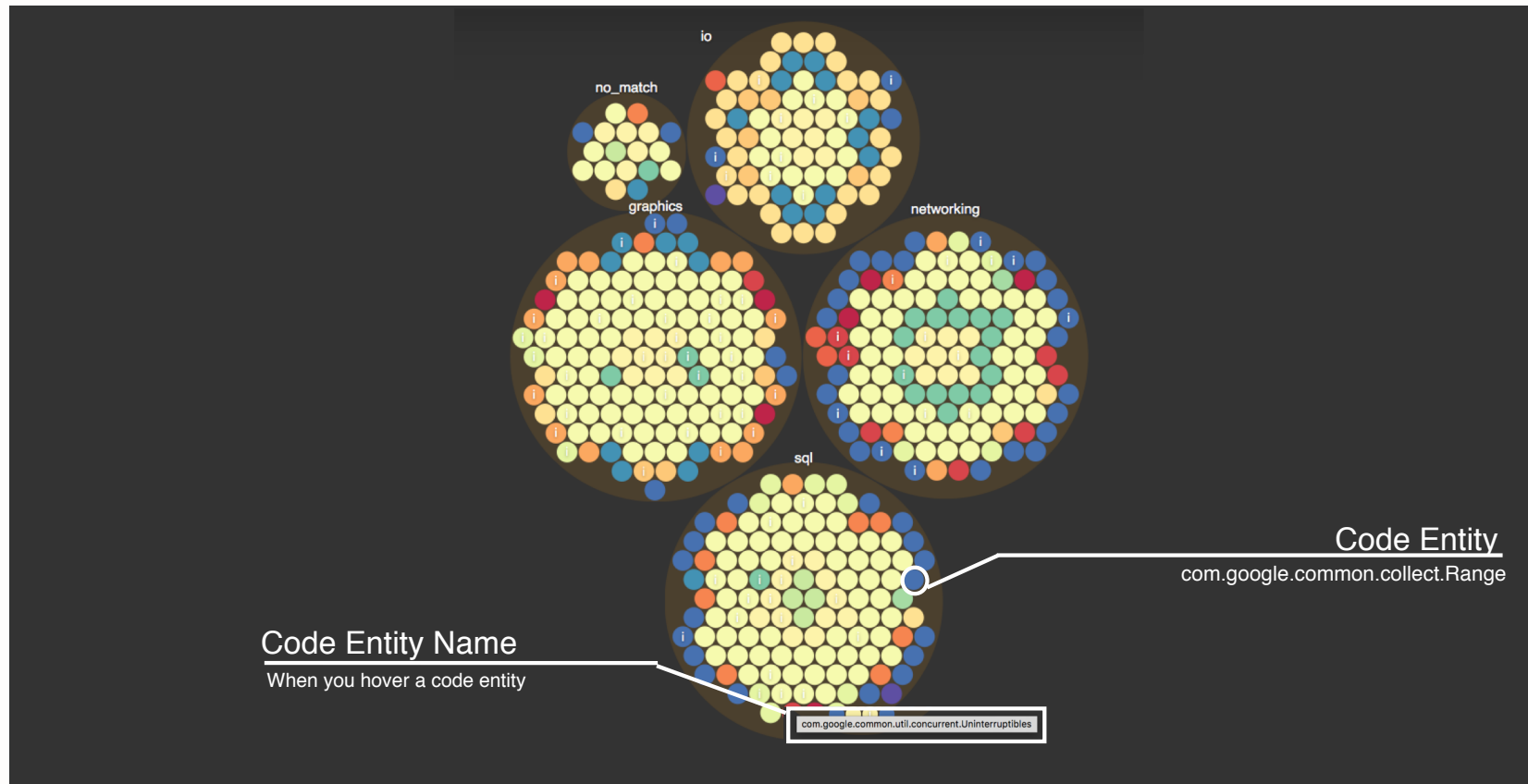
Single-Release Architecture View

Visualization

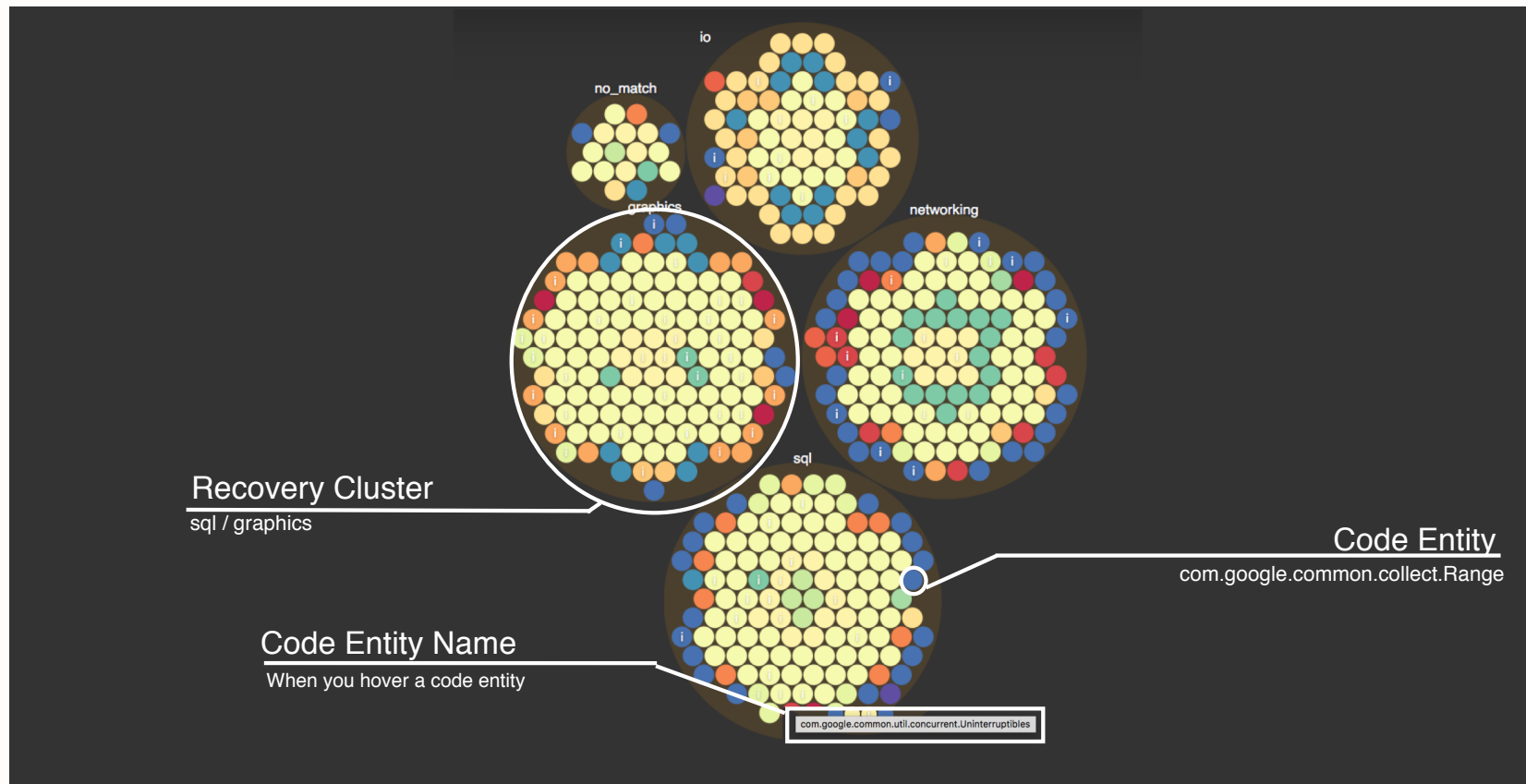


Code Entity
`com.google.common.collect.Range`

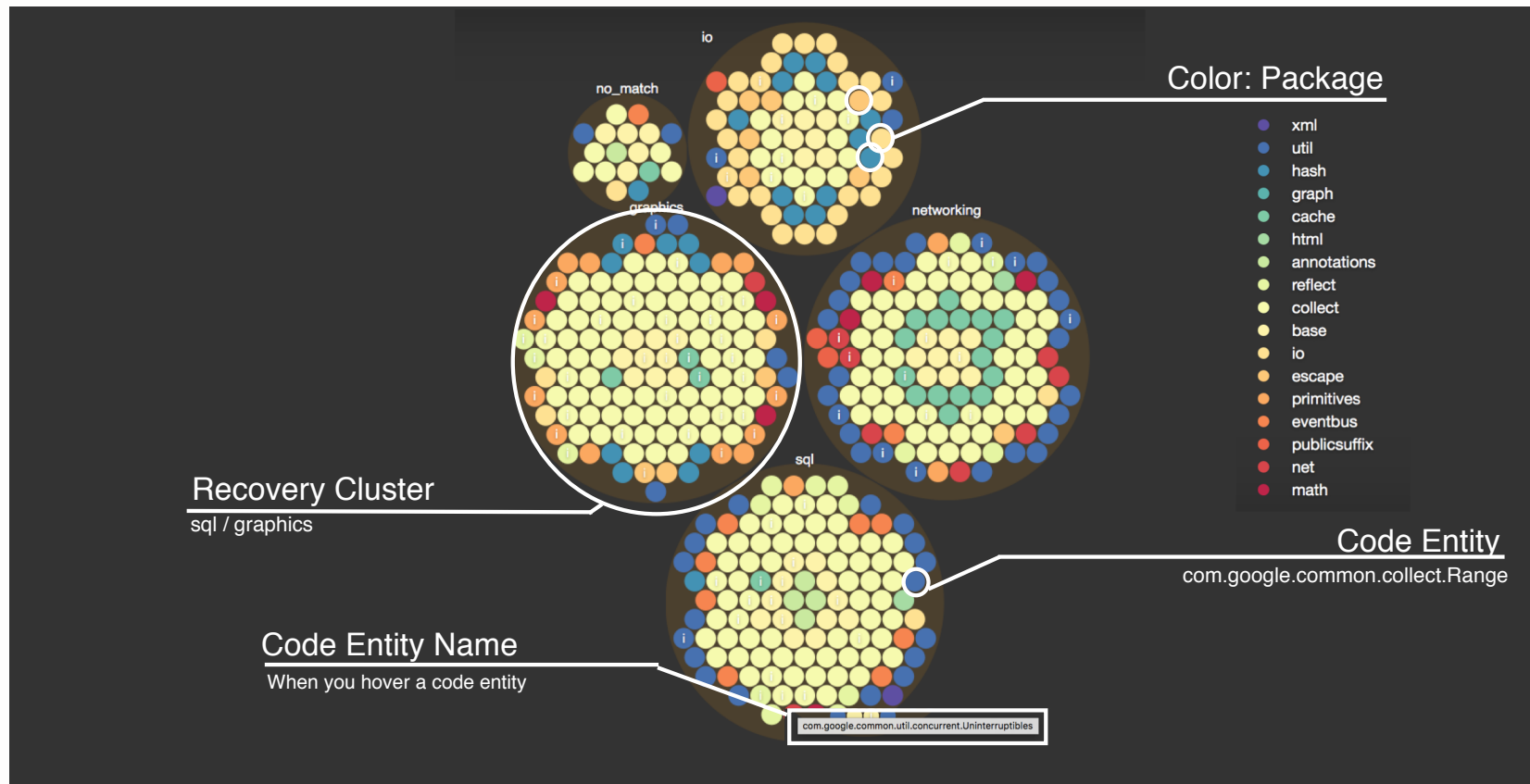
Visualization



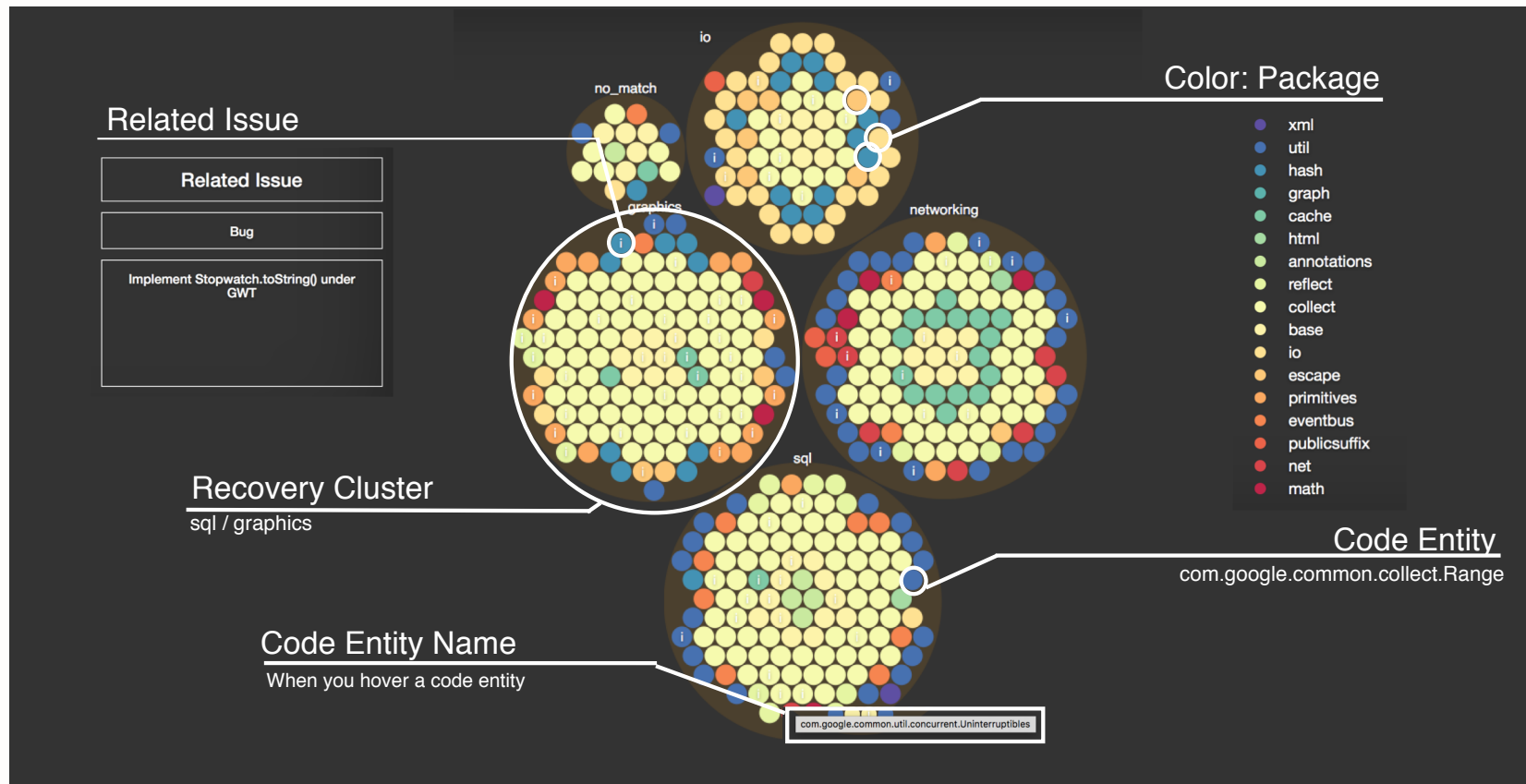
Visualization



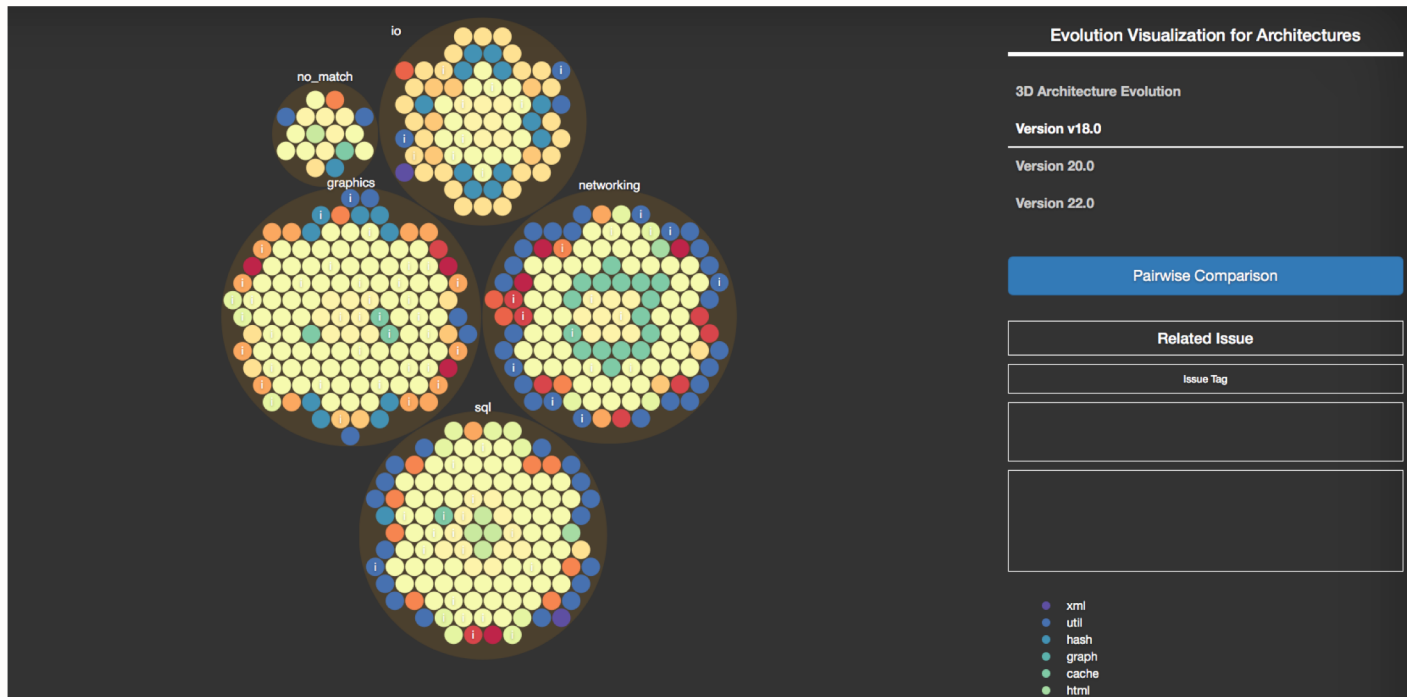
Visualization



Visualization

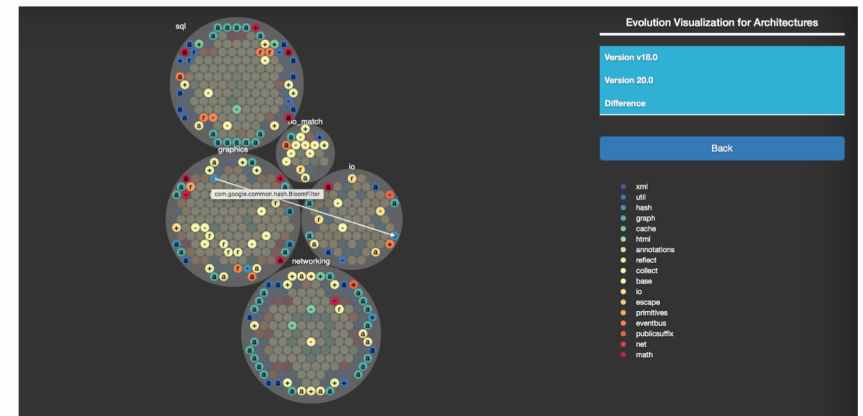
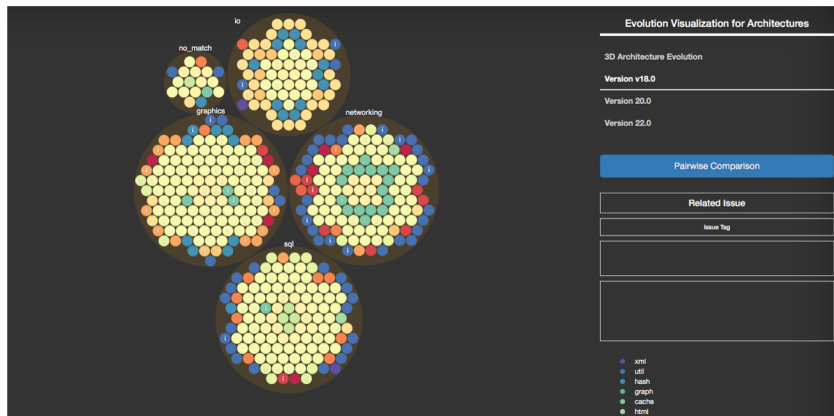
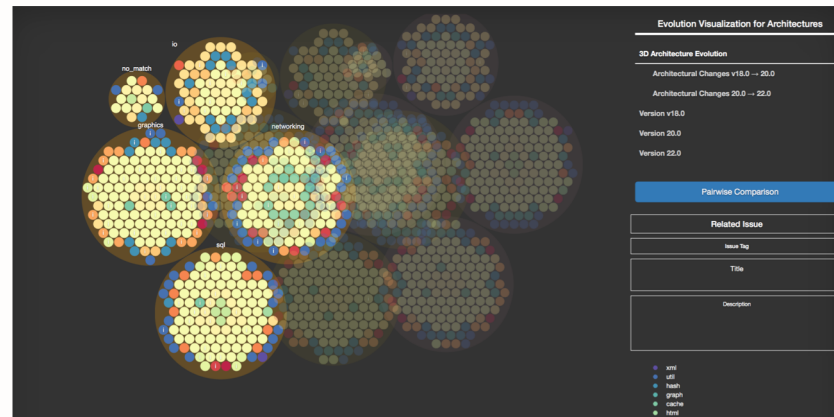


Visualization

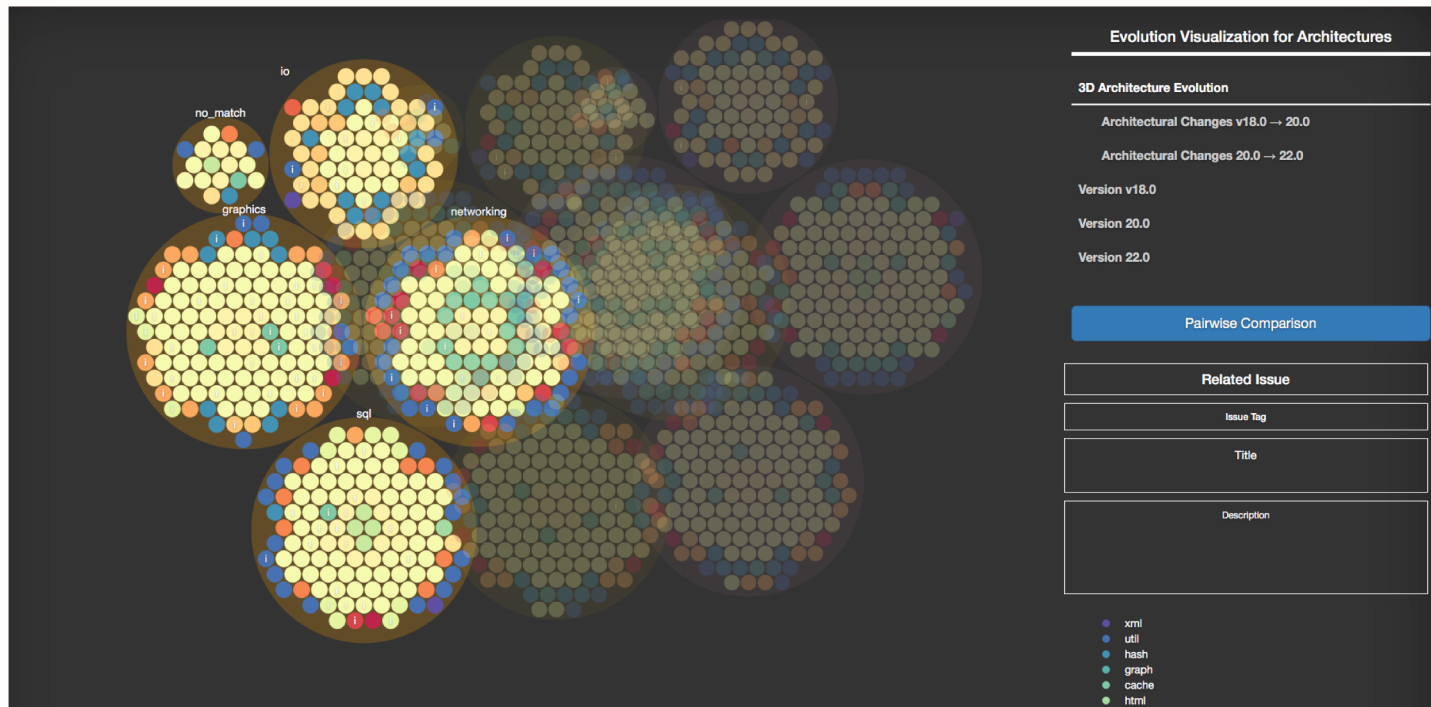


Single-Release Architecture View

Visualization

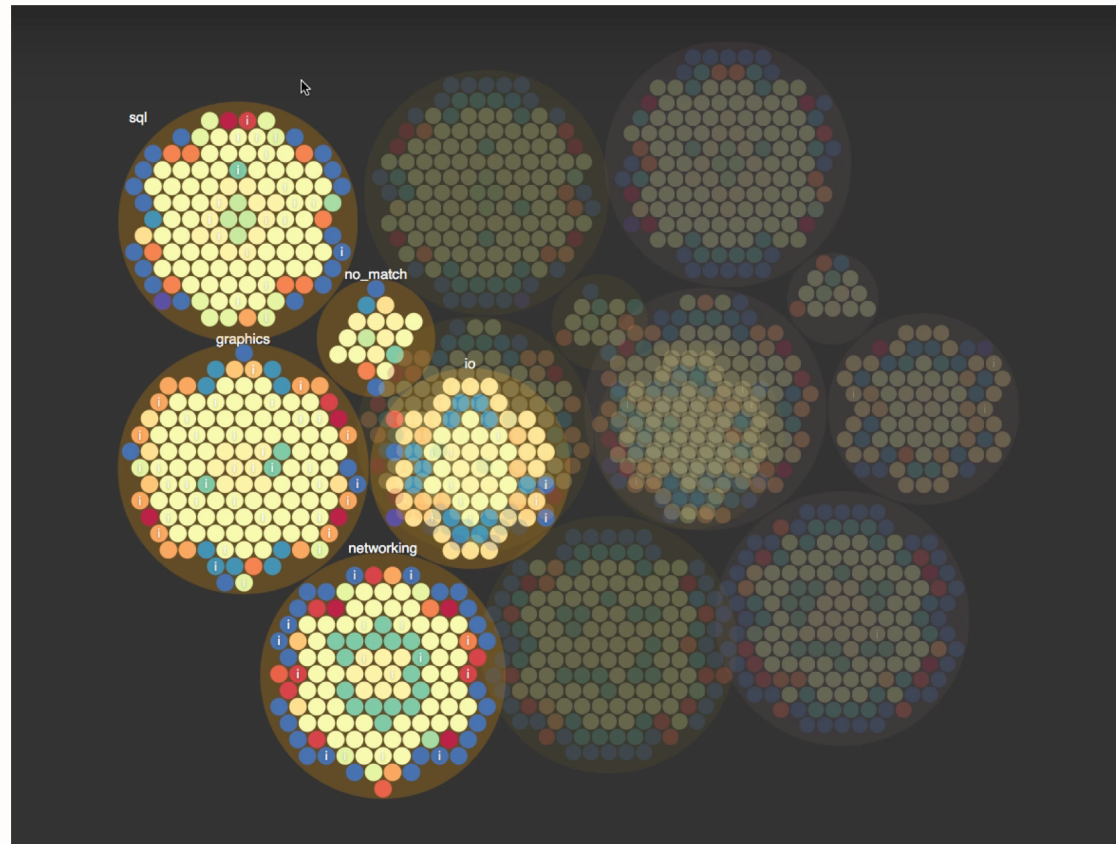


Visualization

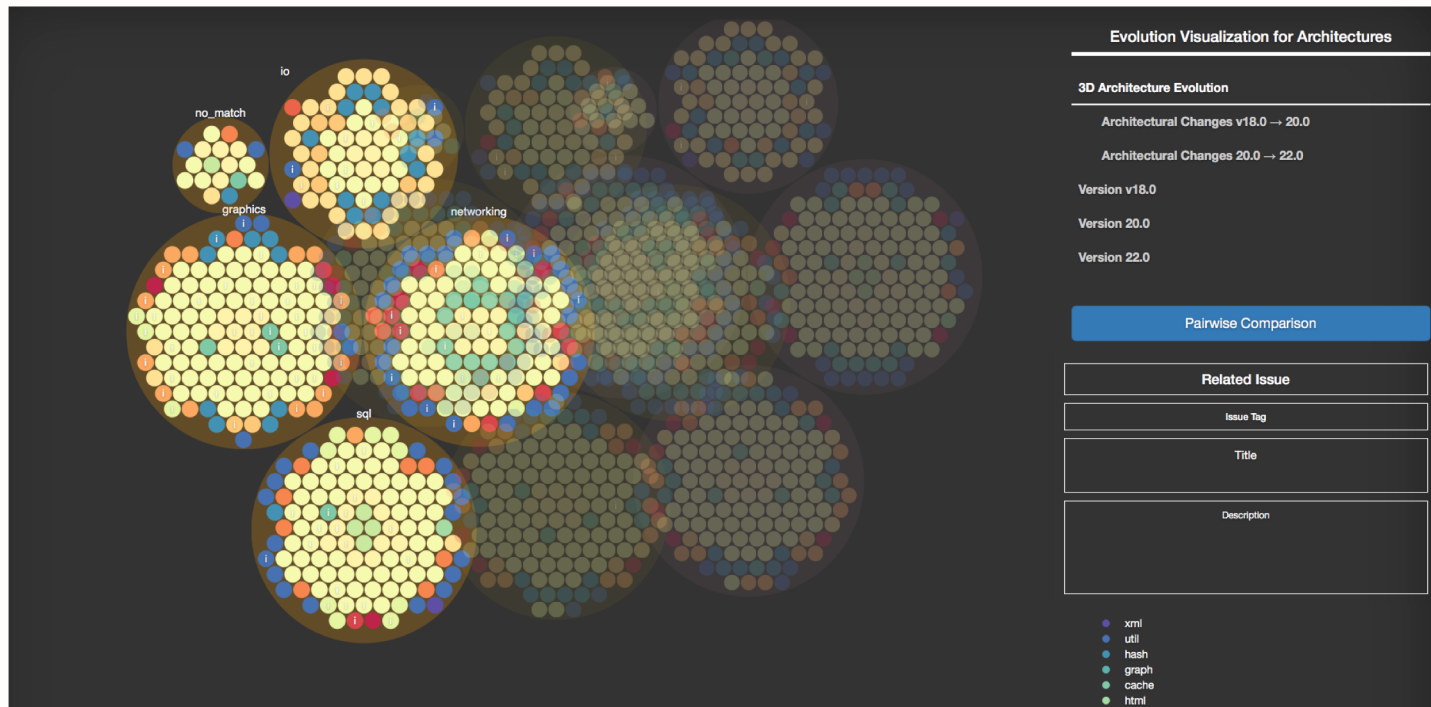


3-D Architecture-Evolution View

Visualization

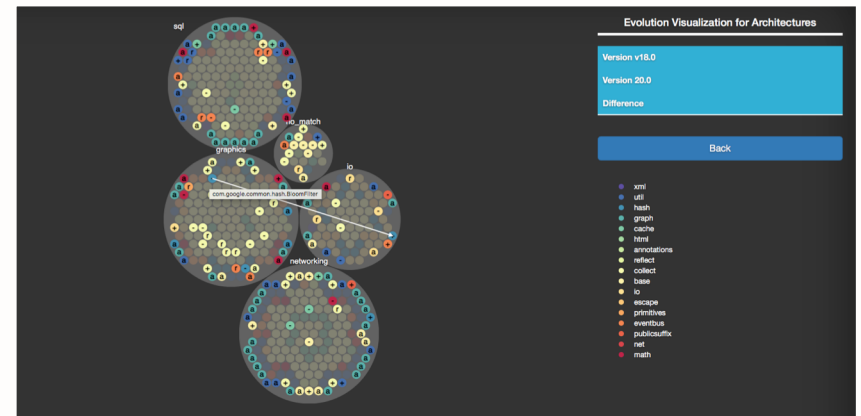
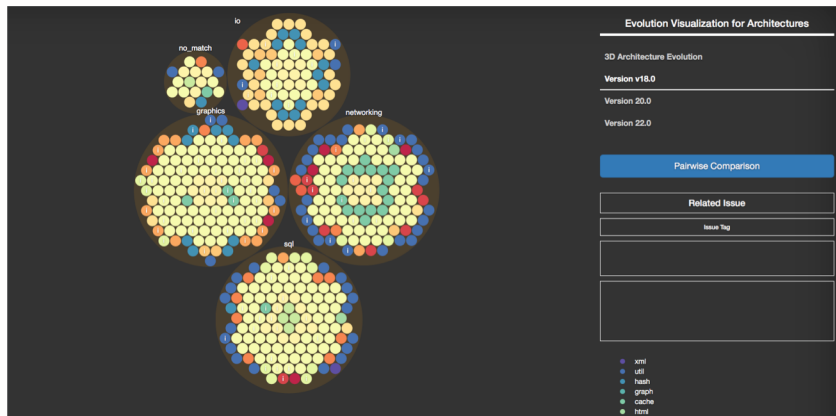
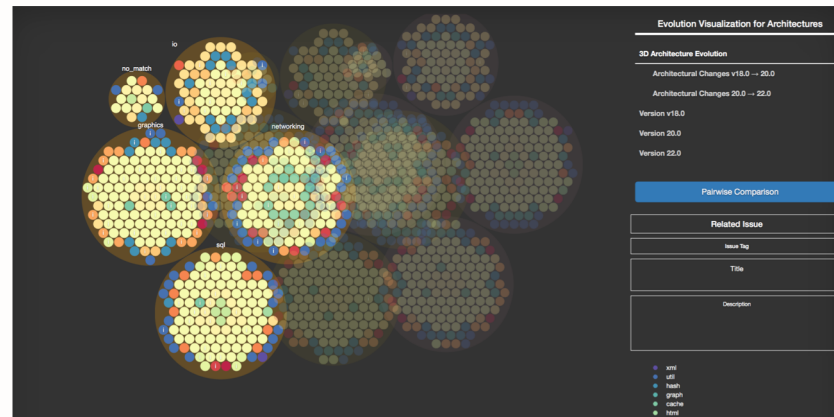


Visualization

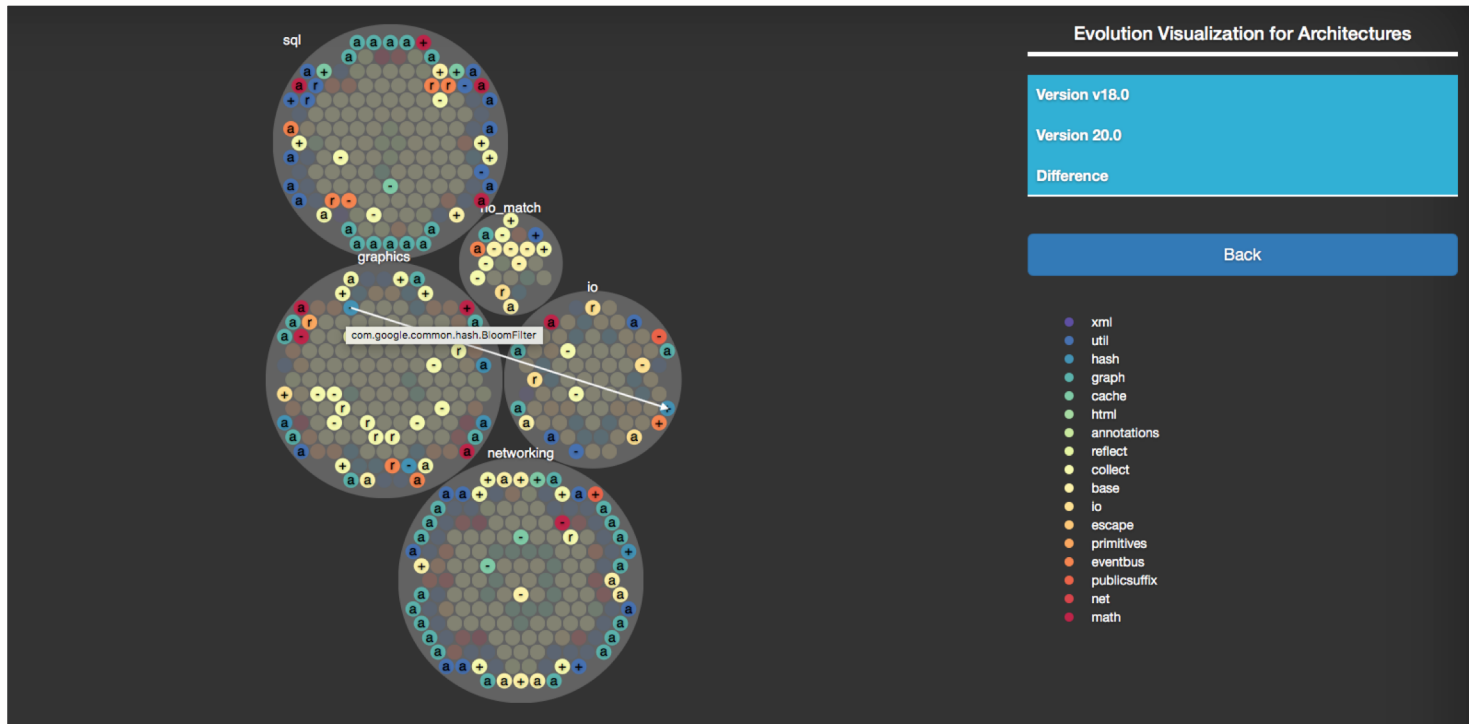


3-D Architecture-Evolution View

Visualization

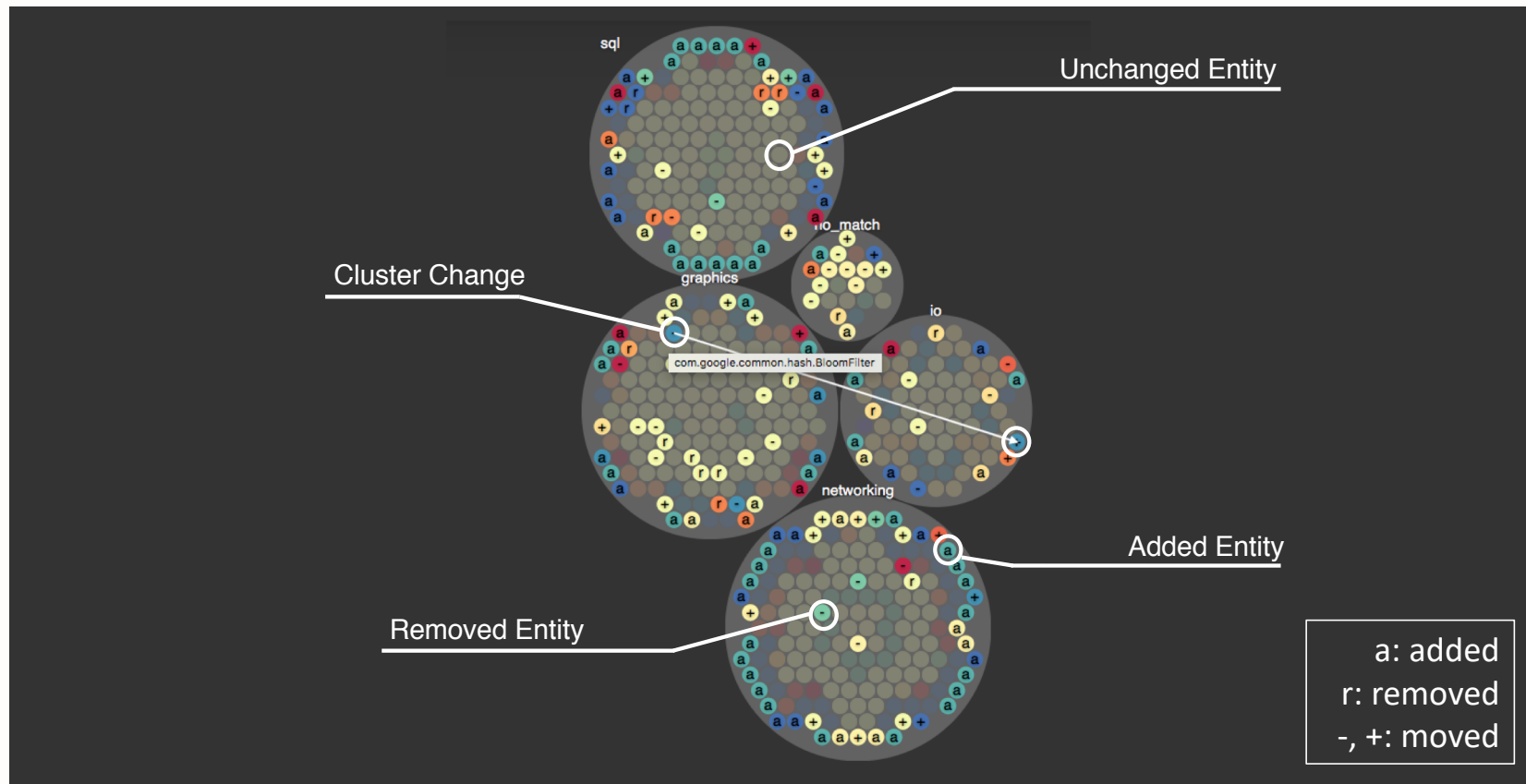


Visualization

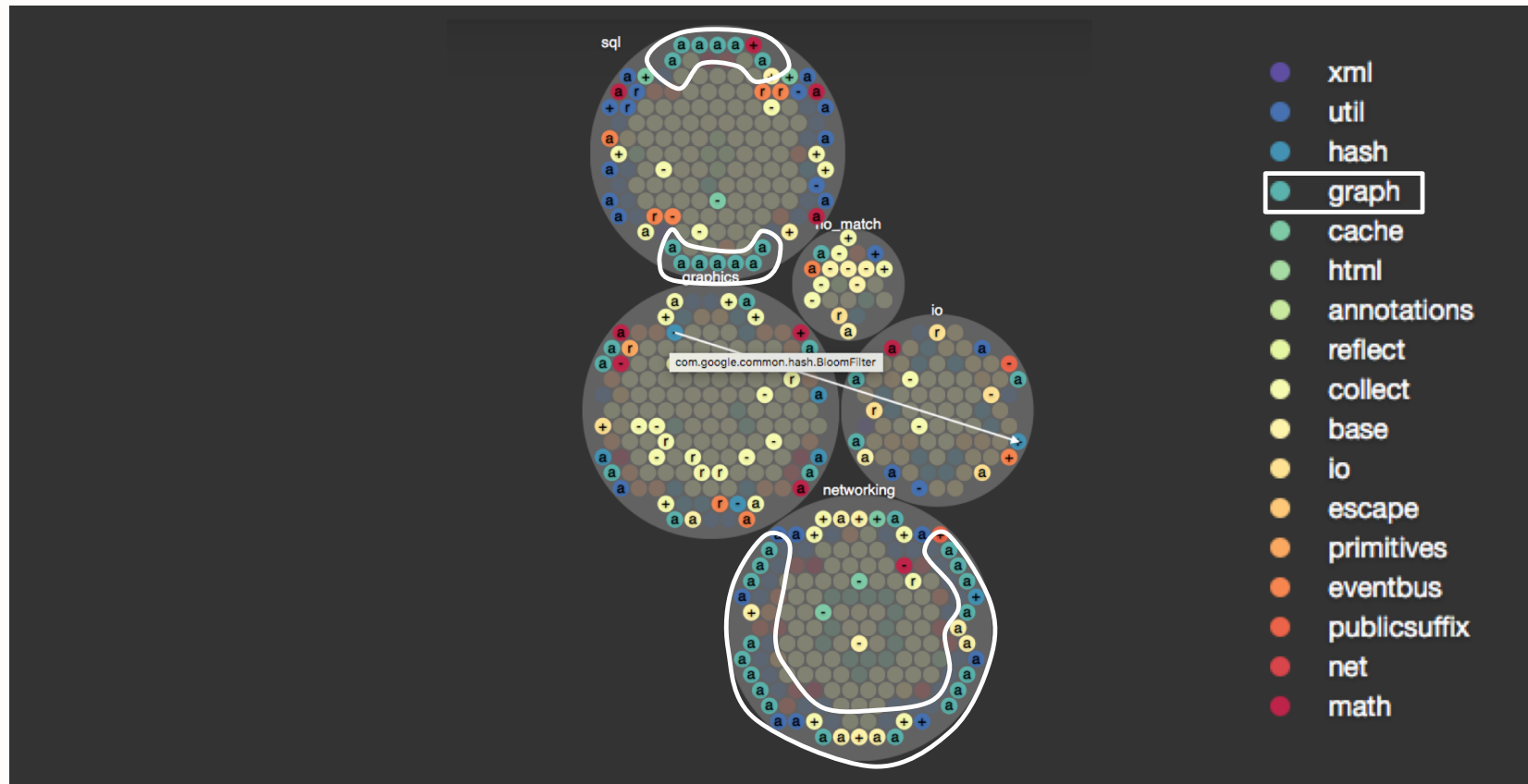


Pairwise Architecture-Comparison View

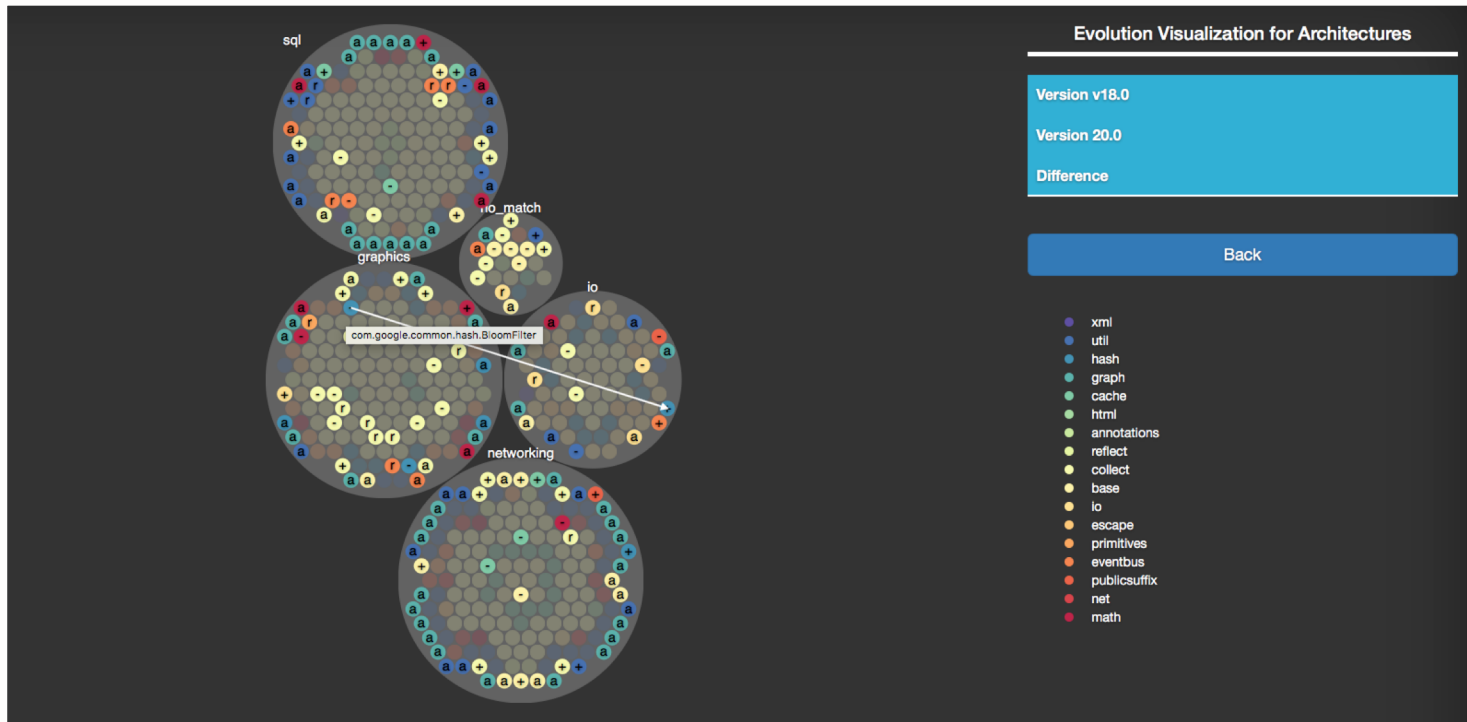
Visualization



Visualization

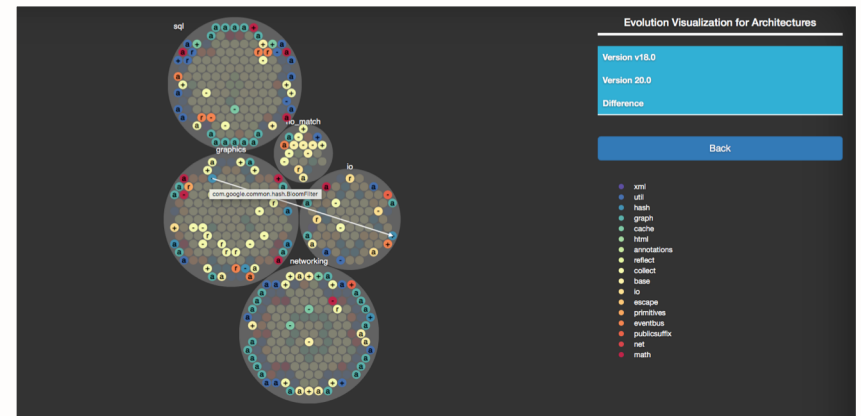
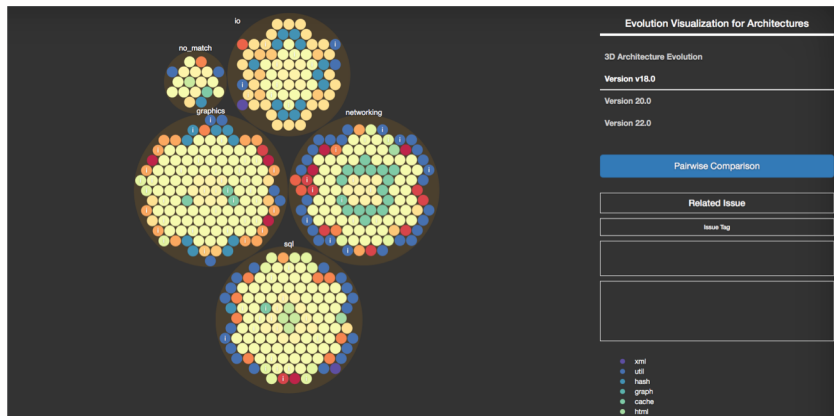
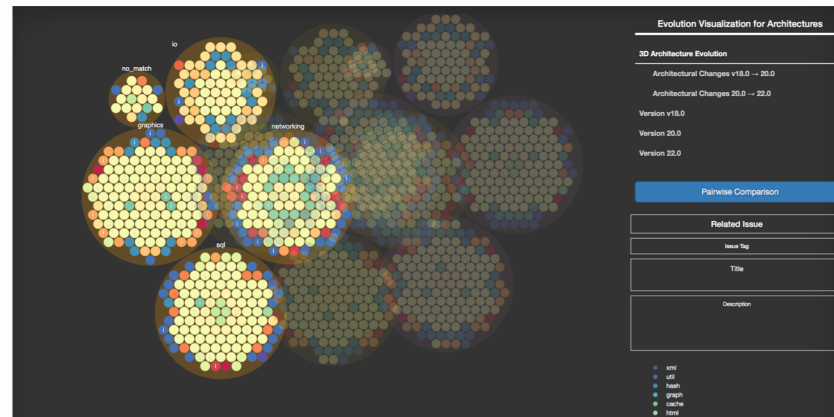


Visualization



Pairwise Architecture-Comparison View

Visualization



Demo 1

Guava (version v18.0, 20.0, 22.0)

Demo 2

**Guava (version v18.0, 20.0, 22.0)
With different perspective**

Demo 3

**Android Java API Framework
(version 6.0.0_r1, 7.0.0_r1)**

Demo 3



Demo 3

**Android Java API Framework
(version 6.0.0_r1, 7.0.0_r1)**

Download

<https://github.com/namdy0429/EVA>

Conclusion

Summary

- EVA visualizes multiple facets of architectural evolution,
 - EVA allows architectural exploration,
 - EVA helps gauge the impact of design decision, and assess the stability
-

Future Work

- Update EVA for general use, deploy EVA to a development organization,
 - Extend to provide additional information such as explicit rationales,
 - Improve to identify architectural changes leading to technical debt.
-

THANK YOU

dayenam@usc.edu

Visualization

